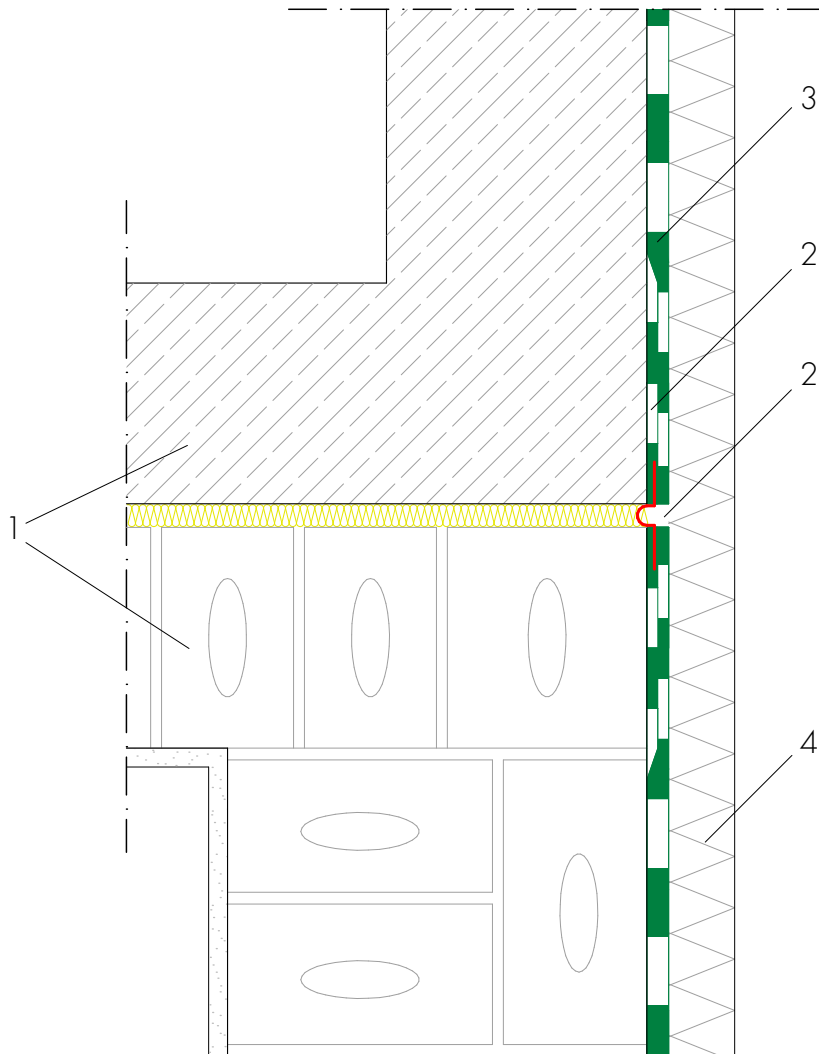


Sealing of a expansion joint in a continuous floor slab



- 1 Masonry or reinforced concrete
- 2 Waterproofing in the joint area with AQUAFIN-RB400 and ADF expansion joint tape
- 3 Waterproofing of buildings with AQUAFIN-RB400. Alternatively with COMBIDIC thick coatings
- 4 Protect the seal with suitable measures.