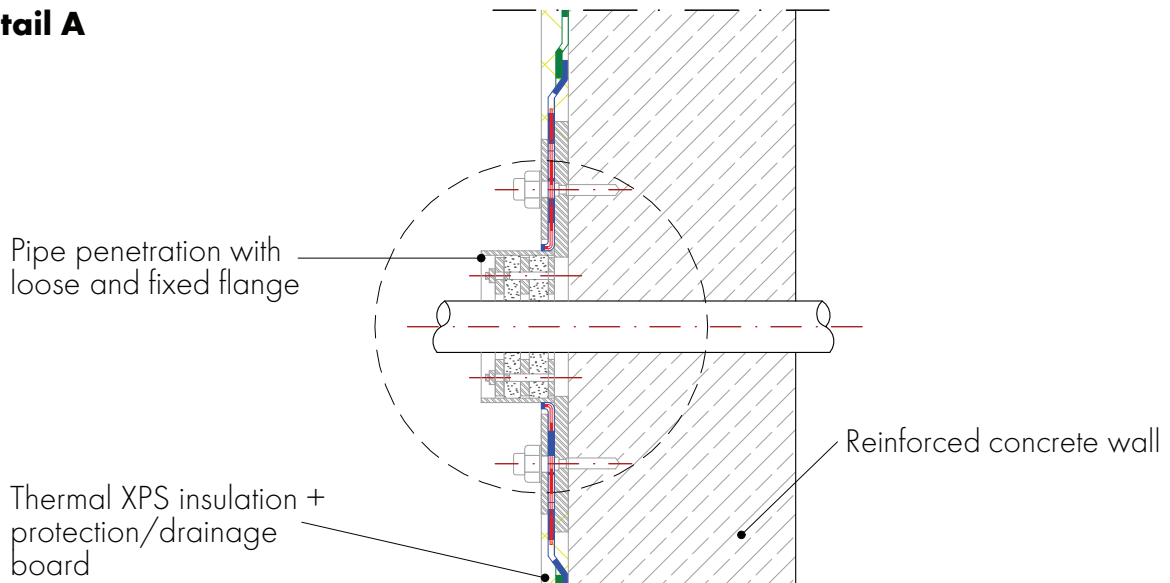


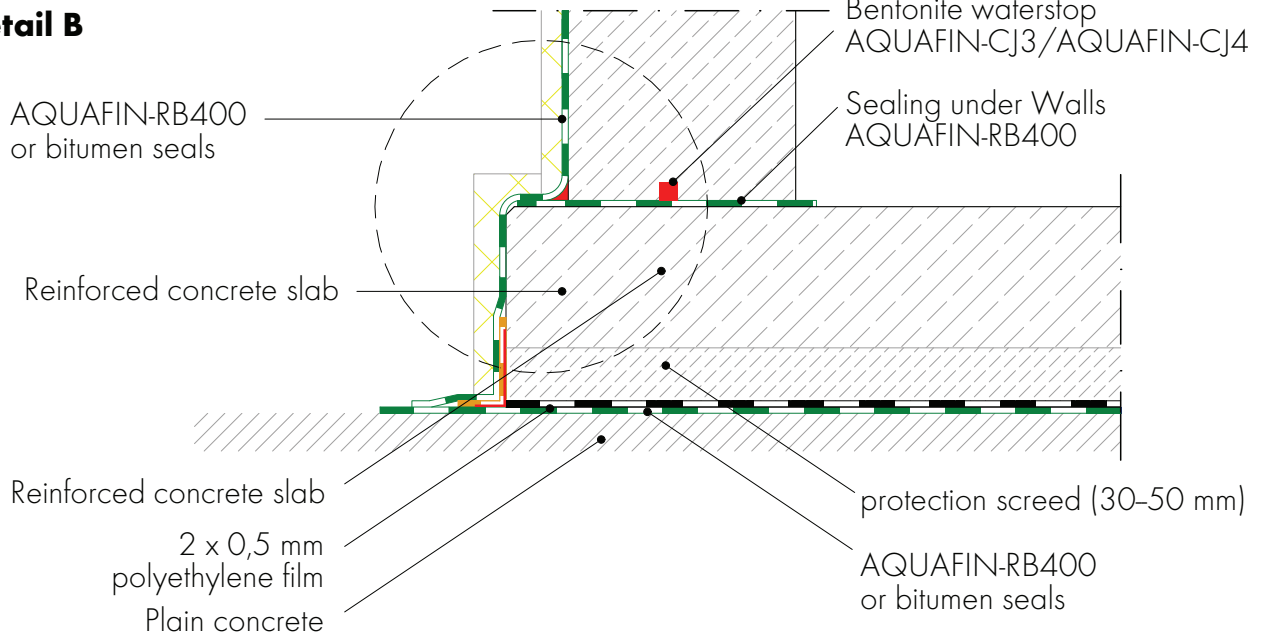
Basement waterproofing with flexible, polymer-modified thick-layer coatings or bituminous seals (trough-shaped waterproofing)

Detail A+B

Detail A

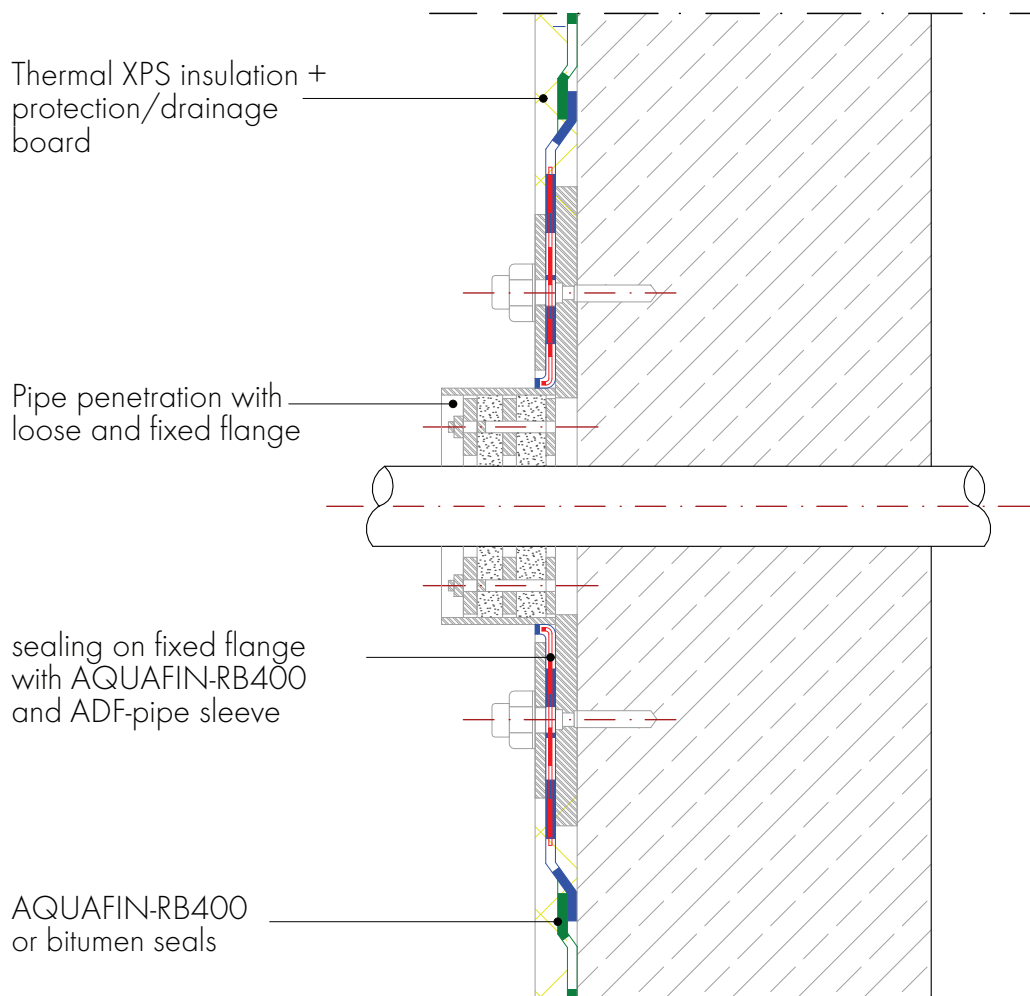


Detail B



Basement waterproofing with flexible, polymer-modified thick-layer coatings or bituminous seals (trough-shaped waterproofing)

Detail A: Pipe penetration waterproofing



Basement waterproofing with flexible, polymer-modified thick-layer coatings or bituminous seals (trough-shaped waterproofing)

Detail B: Waterproofing of the wall-floor transition

