

Concrete technology



Concrete technology

Product information



SCHOMBURG concrete technology - Benefits from our products.

The concrete industry world is very diverse and, for the most part, it cannot be described in one sentence. Balancing the function, form and colour in such a way as to create inspiration, aesthetics and mood is a goal that SCHOMBURG has dedicated itself to.

Many factors influence the result. According to this idea, you need a wide range of products and solutions from various fields. We have gathered our experience in the "Area of competence in concrete technology".

Different concrete products require equally diverse solutions. Here, high quality, perfectly matched concrete admixtures for the entire spectrum of the concrete industry play a decisive role. For more information, please visit www.schomburg.pl

Concrete technology

Product information

Table of contents

4 Admixtures for vibro-pressed concrete

- 5 PURCRETE-BV10, PURCRETE-150
- 6 PURCRETE-75, PURCRETE-75 PLUS
- 7 PURCRETE-40, PURCRETE-50
- 8 REMICRETE-VB1-PLUS, REMICRETE-BW3
- 9 PURCOLOR-5000, PURCOLOR-S1
- 10 REMIPHOB-B3,

11 Pigments for concrete

- 11 REMICOLOR

12 Admixtures for ready-mixed concrete, prefabrication, architectural concrete

- 15 REMICRETE-SP62, BETOCRETE-F27
- 16 BETOCRETE-F,2 REMICRETE-SP22
- 17 REMICRETE-SP10, SAVEMIX-4000
- 18 REMI-AIR-200, RUXOLITH-T5
- 19 REMI-FROST, REMI-FROST-45
- 20 PURCRETE-DF, REMIPLAST-M36

21 Surface protection agents

- 22 SILEX-GLOSS, SILEX-MATT
- 23 REMISIL-CI, REMISIL-SI,
- 24 REMISIL, REMISIL-HE
- 25 REMISIL-TOP

26 Agents for cleaning and renovation of concrete surfaces

- 27 ASO-R005, BICOLOR
- 28 RENOGAL

Admixtures for vibro-pressed concrete

Admixtures for vibro-pressed concrete are mainly plasticizing, aerating, sealing preparations, limiting calcareous efflorescence.

Depending on the type of product - they positively affect the batch and compaction of the product, reduce sticking to the stamp, intensify the colour, seal, and reduce efflorescence.



PURCRETE-BV10

Admixture to mortars and vibro-pressed concrete



Properties:

Thanks to the plasticizing effect, PURCRETE-BV10 allows for better dispersion of cement grains and reduction of friction forces between cement and aggregate grains. The concrete produced features enhanced compaction.

Application:

PURCRETE-BV10 is a plasticizing admixture designed for the production of concrete in a wet consistency. Concrete products with this admixture ensure good closure of the side surfaces, excellent formation of streaks, and lack of adhesion of the mix to the stamp.

Application rate:

- recommended: 0.2-0.4% to the weight of the binder.
- it depends on (but is not limited to) the reactivity of the cement and the grain size curve.
- before applying the admixture, it is recommended to perform tests.
- it is recommended to mix the product before use.

PURCRETE-150

Strong moistening admixture for vibro-pressed concrete



Properties:

The admixture offers high surface activity, which translates into better homogenization of the concrete mix, significantly improving the batch. The admixture shows the best properties in mixes with a moist consistency. It enhances the compaction of vibro-pressed products. It has an increased ability to hold water in a concrete mix, which leads to a higher degree of hydration. It has a positive effect on early and ultimate compressive strength.

Application:

PURCRETE-150 is an admixture for the production of vibro-pressed concrete (construction layer).

The admixture is particularly suitable for manufacturing prefabricated elements such as:

- paving stones,
- curbs and edges,
- paving slabs,
- concrete blocks,
- barrel sections.

Application rate:

0.1-0.5% to the weight of the binding agent.

Best rate - 0.2-0.25%

It is recommended to carry out a test before use. The application rate depends on the desired result and must be adapted to the other additives in the mix.

It is recommended to mix the product before use.

PURCRETE-75

Moistening admixture for vibro-pressed concrete



Properties:

The admixture offers high surface activity, which translates into better homogenization of the concrete mix, significantly improving the batch. The admixture shows the best properties in mixes with a moist consistency. It enhances the compaction of vibro-pressed products. It has an increased ability to hold water in a concrete mix, which leads to a higher degree of hydration. It has a positive effect on early and ultimate compressive strength.

Application:

PURCRETE-75 is an admixture for the production of vibro-pressed concrete (construction layer). The admixture is particularly suitable for manufacturing prefabricated elements such as:

- paving stones,
- curbs and edges,
- paving slabs,
- concrete blocks,
- barrel sections.

Application rate:

0.2-0.5% to the weight of the binding agent. It is recommended to carry out a test before use. The application rate depends on the desired result and must be adapted to the other additives in the mix. It is recommended to mix the product before use.

PURCRETE-75 PLUS

Admixture based on surfactants for vibro-pressed concrete



Properties:

PURCRETE-75 PLUS offers high surface activity, which translates into better homogenization of the concrete mix, significantly improving the batch. The admixture shows the best properties in mixes with a moist consistency. It enhances the compaction of vibro-pressed products. It has an increased ability to hold water in a concrete mix, which leads to a higher degree of hydration. It has a positive effect on early and ultimate compressive strength. Concrete products with this admixture offer a good closure of the side surfaces with a clear draft, stable geometry and sharp edges.

Application (construction and surface layer):

PURCRETE-75 PLUS is an admixture for the production of vibro-pressed concrete (construction and external layer). The admixture is particularly suitable for manufacturing prefabricated elements such as:

- paving stones,
- curbs and edges,
- paving slabs,
- concrete blocks.

Application rate:

0.2-0.5% to the weight of the binding agent.
Mix before use.

PURCRETE-40

Admixture for vibro-pressed concrete on ordinary and light aggregates



Properties:

Thanks to the plasticizing effect, PURCRETE-40 allows for better dispersion of cement grains and reduction of friction forces between cement and aggregate grains. Improves the batch. The concrete produced features enhanced compaction.

Application:

PURCRETE-40 is a plasticizing admixture designed for the production of concrete in wet consistency. Concrete products with this admixture offer a good closure of the side surfaces. The admixture is suitable for manufacturing prefabricated elements such as:

- paving stones,
- curbs and edges,
- paving slabs,
- hollow tiles on light aggregates.

Application rate:

Recommended: 0.2-0.4% to the weight of the binder; Testing is recommended before using the admixture.

It is recommended to mix the product before use.

PURCRETE-50

Admixture for vibro-pressed and vibrated concrete



Properties:

The PURCRETE-50 offers high surface activity, which translates into better homogenization of the concrete mix, significantly improving the batch. The admixture shows the best properties in mixes with a moist consistency. It enhances the compaction of vibro-pressed and vibrated products. It has an increased ability to hold water in a concrete mix, which leads to a higher degree of hydration. It has a positive effect on early and ultimate compressive strength. Concrete products with this admixture offer a good closure of the side surfaces.

Application:

PURCRETE-50 is an admixture for the production of vibro-pressed concrete (construction layer). Vibrated concrete. The admixture is particularly suitable for manufacturing prefabricated elements such as:

- paving stones,
- curbs and edges,
- paving slabs,
- concrete blocks,
- barrel sections,
- precast concrete pavement panels,
- jomb-type slabs.

Application rate:

0.3-0.5% to the weight of the binding agent.

It is recommended to carry out a test before use.

The application rate depends on the desired result and must be adapted to the other additives in the mix. It is recommended to mix the product before use.

REMICRETE-VB1-PLUS (BV)

Special aeration and plasticizing admixture for PCE-based vibro-pressed concrete



Properties:

It is an aerating and plasticizing admixture based on modified polycarboxylic esters, intended for the production of concrete built in the weather barrier (as well as the construction layer) of vibro-pressed elements.

Application:

REMICRETE-VB1-PLUS (BV) is used in the production of the weather barrier to prevent the mix from sticking to the stamp. Thanks to better dispersion of cement grains, it enables faster growth of early and ultimate compressive strength and higher resistance to de-icing agents. REMICRETE-VB1-PLUS (BV) is designed for the production of vibro-pressed elements such as:

- paving stones,
- curbs,
- paving slabs,
- piled walls,
- structural landscaping elements, etc.

Application rate:

0.2-1.2% to the weight of the binder.

The application rate depends on, but is not limited to, the reactivity of the cement and the grain size curve;

Testing is recommended before using the admixture. It is recommended to mix the product before use.

REMICRETE-BW3 (LP/BV)

Aeration and plasticizing admixture with a wet consistency for high concrete products such as curbs, edges, effluent channels, etc.



Properties:

REMICRETE-BW3 (LP/BV) causes dispersion of cement grains leading to better homogenization of the mix and reduced friction between concrete components. With this admixture, you can obtain a higher density concrete compared to traditional plasticizing admixtures. The use of REMICRETE-BW3 (LP/BV) increases the sand equivalent value, improves the batched water application rate, and reduces the amount of cement per 1 m³ of the concrete mix.

Application (in the construction layer):

It is an aerating and plasticizing admixture based on modified polycarboxyl esters and surfactants intended for the production of vibro-pressed concrete. If you add this admixture, you can obtain the best amount of batched water without the so-called "barrel" effect. The admixture improves the dispersion of cement grains, which accelerates early compressive strength and improves ultimate compressive strength. REMICRETE-BW3 (LP/BV) is designed for the production of vibro-pressed elements such as paving stones, curbs, paving slabs, etc.

Application rate:

Recommended: 0.2-1.2% to the weight of cement.

Best rate: 0.4-0.5%.

The application rate depends on, but is not limited to, the reactivity of the cement and the grain size curve; Testing is recommended before using the admixture.

It is recommended to mix the product before use.

PURCOLOR-5000

This plasticiser for vibro-pressed concrete reduces the formation of calcium efflorescence and sticking to the stamp



Properties:

PURCOLOR-5000 is an admixture that reduces the growth of calcium efflorescence and increases the colour intensity of individual elements. It improves the batch and reduces sticking to the stamp.

Application:

The admixture is used in the production of the surface layer of dyed prefabricated elements, products for road construction and structural landscaping elements such as:

- concrete paving stones,
- piled walls,
- concrete pots,
- curbs,
- paving slabs,
- structural landscaping elements.

Application rate:

Recommended application rate: 0.2-0.5% to the weight of the binder.

It depends on, but is not limited to, the reactivity of the cement and the grain size curve.

Testing is recommended before using the admixture.

It is recommended to mix the product before use.

PURCOLOR-S1 (DM)

Sealing admixture limiting efflorescence, intended for the production of vibro-pressed products



Properties:

It is a liquid sealing admixture designed for the production of concrete products with high durability and aesthetic values. Owing to the active ingredients, the admixture has a positive effect on the reduction of both primary and secondary calcium efflorescence.

Application:

PURCOLOR-S1 (DM) is recommended for the production of wet concrete in the construction layer and weather barrier: concrete paving stones, curbs, slabs, piled walls, pots, concrete cladding, decorative elements.

Advantages:

- highly effective reduction of capillary rise and water uptake,
- concrete sealing effect resistant to changing weather conditions,
- highly effective reduction of calcium efflorescence in coloured concrete,
- higher degree of compaction of concrete products.

Application rate:

0.6-1.6% wt. in relation to the amount of binder (cement/filler).

The appropriate proportions should be determined in the preliminary tests using the type of cement and the appropriate concrete mass.

The added amount of PURCOLOR-S1 (DM) should be determined; taking into account the treatment criteria and the required characteristics of the target product.

It is recommended to mix the product before use.

REMIPHOB-B3 (DM)

Admixture ensuring full-body hydrophobization of mineral construction materials



Properties:

REMIPHOB-B3 (DM) is a high-performance admixture that ensures full-body hydrophobization of mineral construction materials and enables optimization of the concrete structure.

Application:


REMIPHOB-B3 (DM) is a concrete admixture designed for the production of concrete products with significantly reduced water absorption. Concrete gains high density thanks to its plasticizing properties. Concrete is much easier to compact, acquires a uniform consistency, which in turn allows to obtain even surfaces. It reduces the occurrence of calcareous efflorescence, reduces the phenomenon of capillary rise and increases the resistance to de-icing agents.

Application rate:

1.0–2.0% wt. in relation to the amount of binder (cement/filler). The appropriate proportions should be checked in the preliminary tests using the type of cement and the appropriate concrete mass. It is recommended to mix the product before use.

Pigments for concrete

REMICOLOR liquid pigment is used in the construction materials industry. It is especially recommended to use in the production of coloured paving stones, curbs, and paving slabs. The dye can also be utilized in the production of factory-made coloured concrete.

REMICOLOR	
Liquid pigment	
	<p>Properties: It is produced using pigments made of iron oxides and special technology, so that its resistance to light and the influence of weather conditions do not deteriorate. REMICOLOR can be pumped and, thanks to its particularly high dispersion and uniformity, ensures uniform and intense concrete colours. The dye is produced using pigments made of REMIFEROX iron oxides and a special technology.</p> <p>Application: REMICOLOR liquid dye is used in the construction materials industry. It is especially recommended to use in the production of coloured paving stones, curbs, and paving slabs. The dye can also be utilized in the production of factory-made coloured concrete.</p> <p>Application rate: The dye is applied at a rate of 4-6% in relation to the binding agent. It is available in the following shades: - red, brown, yellow, orange, anthracite, black, white.</p>



B-86



G-21



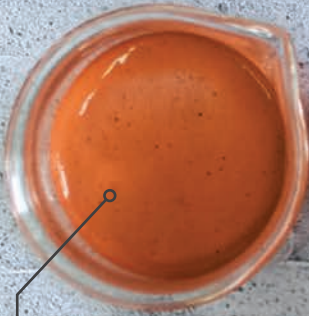
C-90



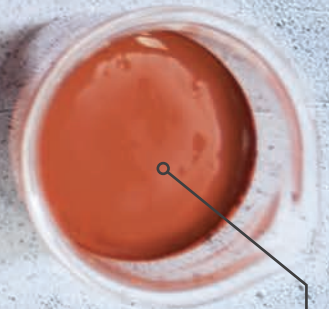
R-20



G-552



B-35



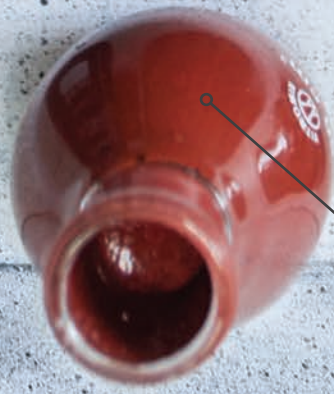
S-50



S-60



B-55





Admixtures for ready-mixed concrete, prefabrication, architectural concrete

Admixtures for concrete mainly include plasticizing, fluidizing, retarding (delaying) or accelerating bonding, aerating, and sealing preparations.

Currently, you can find on the market a wide range of admixtures for concrete. Their consumption is constantly increasing. One of the admixtures is a plasticizer, which significantly reduces the surface tension of batched water and plasticizes the concrete mix. Superplasticizer is a type of admixture for concrete, which causes the formation of a double ion layer around the cement grains, which reduces the friction forces, intensively disperses cement paste, and liquefies the concrete mix.

Admixtures for concrete perform in many other functions. They reduce water demand of the components of the concrete mix, increase ultimate compressive strength, and improve concrete frost resistance. A big advantage of concrete admixtures is also the improvement of concrete appearance, which is of great importance for the architecture of the entire facility.



without REMICRETE



with REMICRETE

REMICRETE-SP62 (FM)

Highly effective fluidizing admixture for concrete with the required high early compressive strength



Properties:

It is a highly concentrated liquid admixture. Using this admixture, you can obtain a homogeneous mix in which the friction forces between the components of the mix are minimized. REMICRETE-SP62 (FM), with its high potential for reducing batched water, can be used at a small rate to achieve the required consistency. With the use of a modern raw material base, we achieved an enormous increase in early compressive strength. Compared to concrete made with traditional fluidizing admixtures, when you use REMICRETE-SP62 (FM), you reduce the formwork removal time to 4 hours.

Application:

REMICRETE-SP62 (FM) has been developed specifically for manufacturers of prefabricated concrete elements. This admixture is used where concrete with a low water-cement ratio and a high content of mineral additives is necessary to maintain a liquid consistency and high workability. REMICRETE-SP62 (FM) is designed for the production of F5 to F6 concrete, as well as for self-compacting concrete (SCC/SVB) with the required high early compressive strength and architectural concrete.

Application rate:

Recommended application rate: 0.2-1.8% to the weight of the binder.
It depends on (but is not limited to) the reactivity of the cement and the grain size curve.
Testing is recommended before using the admixture.
It is recommended to mix the product before use.

BETOCRETE-F27 (FM)

Fluidizing admixture for concrete



Properties:

This admixture is produced using naphthalene's and lignosulfonates. At a low application rate, it acts as a standard plasticizing admixture, whereas at a higher rate - as a fluidizing admixture. BETOCRETE-F27 (FM) can reduce the water-cement ratio at the same consistency or fluidize the concrete mix at the same w/c ratio.

Application:

The BETOCRETE-F27 (FM) can be used in all concrete types produced in accordance with PN-EN 206-1. It is also used in the production of ready-mixed concrete and prefabricated (especially thin-walled) elements. The admixture does not reduce the early compressive strength and increases the ultimate compressive strength of concrete compared to standard concrete. The admixture can be used in reinforced and prestressed concrete.

Application rate:

Recommended application rate: 0.3-2.0% to the weight of the binder.
Best rate: 1.0-1.5%.
It depends on, but is not limited to, the reactivity of the cement and the grain size curve.
Testing is recommended before using the admixture.
It is recommended to mix the product before use.

BETOCRETE-F2 (FM)

Fluidizing admixture



Properties:

This admixture is produced using naphthalene. At a low application rate, it acts as a standard plasticizing admixture, whereas at a higher rate – as a fluidizing admixture. BETOCRETE-F2 (FM) can reduce the water-cement ratio at the same consistency or fluidize the concrete mix at the same w/c ratio.

Application:

The BETOCRETE-F2 (FM) can be used in all concrete types produced in accordance with PN-EN 206-1. It is also used in the production of ready-mixed concrete and prefabricated (especially thin-walled) elements.

Application rate:

Recommended application rate: 0.3–2.0% to the weight of the binder.
It depends on (but is not limited to) the reactivity of the cement and the grain size curve.
Testing is recommended before using the admixture.
It is recommended to mix the product before use.

REMICRETE-SP22 (FM)

PCE-based fluidizing admixture for ready-mixed concrete



Properties:

It is a highly effective, state-of-the-art admixture based on polyether carboxylate. Compared to traditional plasticizing additives, thanks to the use of modern raw materials, it is possible to produce very homogeneous concrete mixes, in which the internal friction forces between the components are minimized. The admixture allows shorter mixing times than for concentrated products. The high efficiency of the admixture gives the possibility of obtaining a complex consistency at a low application rate. The use of REMICRETE-SP22 (FM) increases the early and ultimate compressive strength of concrete.

Application:

REMICRETE-SP22 (FM) is used in the production of concrete and in prefabrication. If you use the admixture, you can obtain very low w/c ratios, and thus increase the strength and resistance to chemical and physical aggression. REMICRETE-SP22 (FM) is an admixture that works particularly well in the production of self-compacting concrete (SCC/SVB). The admixture can be used in reinforced and prestressed concrete. It does not delay the early strength build-up.

Application rate:

Recommended application rate: 0.4–2.0% to the weight of the binder.
It depends on (but is not limited to) the reactivity of the cement and the grain size curve.
Before applying the admixture, you are recommended to make trial batches.
It is recommended to mix the product before use.

REMICRETE-SP10 (FM)

Fluidizing admixture for high-performance (BWW) and self-compacting (SCC) concrete



Properties:

REMICRETE-SP10 (FM) is a high-effective, state-of-the art admixture based on polyether carboxylate. Compared to traditional plasticizing additives, thanks to the use of modern raw materials, it is possible to produce very homogeneous concrete mixes, in which the internal friction forces between the components are minimized. The very high efficiency of the admixture gives the possibility of obtaining the assumed consistency at a low application rate. The use of REMICRETE-SP10 (FM) increases the early and ultimate compressive strength of concrete.

Application:

REMICRETE-SP10 (FM) is used in the production of concrete and in prefabrication. If you use the admixture, you can obtain very low w/c ratios, and thus increase the strength and resistance to chemical and physical aggression. REMICRETE-SP10 (FM). It is an admixture that works particularly well in the production of self-compacting concrete (SCC/SVB), in which a high content of sil fractions is required.

Application rate:

Recommended application rate: 0.2-1.6% to the weight of the binder.
It depends on (but is not limited to) the reactivity of the cement and the grain size curve.
Testing is recommended before using the admixture.
It is recommended to mix the product before use.

SAVEMIX-4000 (BV)

A plasticizing admixture for concrete that significantly reduces the amount of water



Properties:

When used in commodity concrete, it causes better dispersion of cement grains, leading to better homogenization of the mix and reduced friction between concrete components. This facilitates pumping, incorporating and compacting the concrete mix. If you use SAVEMIX-4000 (BV), you reduce the w/c ratio while maintaining the same consistency or increase the total amount mix while maintaining the w/c ratio.

Application:

SAVEMIX-4000 (BV) is a versatile admixture designed for the production of ready-mixed concrete. The admixture allows to obtain consistency in the F3 range while achieving high early and ultimate compressive strength of concrete.

The SAVEMIX-4000 (BV) is designed for:

- façade concrete,
- pumpable concrete,
- all concrete of normal consistency.

Application rate:

Recommended: 0.2-1.1% to the weight of cement.
It depends on (but is not limited to) the reactivity of the cement and the grain size curve.
Testing is recommended before using the admixture according to the applicable regulations.
It is recommended to mix the product before use.

REMI-AIR-200 (LP)

Aerating admixture



Properties:

REMI-AIR-200 (LP) leads to the formation of microscopic air bubbles in the mix with a specific decomposition factor in hardened concrete. Spherical bubbles absorb the pressure resulting from the increase in the volume of freezing water, preventing the formation of microcracks. The introduction of additional air bubbles into the fresh mix improves workability and homogenizes the mix. REMI-AIR-200 (LP) does not affect the cement hydration process.

Application:

REMI-AIR-200 (LP) is an admixture intended for use in concrete working in the exposure class up to XF4, in which there is frost aggression in an aquatic environment strongly saturated with de-icing agents. Such conditions occur, for example, on bridges, in road concrete, in tunnels, port wharves, or sewage treatment plants.

Application rate:

Recommended application rate: 0.05–0.5% to the weight of the binder.
It depends on (but is not limited to) the reactivity of the cement and the grain size curve.
Before applying the admixture, you are recommended to make trial batches.
It is recommended to mix the product before use.

RUXOLITH-T5 (VZ)

Phosphate binding retarding admixture



Properties:

RUXOLITH-T5 (VZ) delays the cement binding process, so that the concrete mix remains workable for longer. By extending during hydration, the formation of a large amount of heat in the first period is reduced, thus preventing the formation of thermal stresses and scratches in solid concrete elements.

Application:

RUXOLITH-T5 (VZ) is especially suitable for use in high ambient temperatures and in large solid concrete elements. RUXOLITH-T5 (VZ) is used wherever working properties of a mix require a longer retention time.

Application rate:

Recommended application rate: 0.2–3.0% to the weight of the binder.
It depends on (but is not limited to) the reactivity of the cement and the grain size curve.
Testing is recommended before using the admixture.
It is recommended to mix the product before use.

REMI-FROST (BV)

Anti-freezing admixture for concrete and mortar



Properties:

REMI-FROST (BV) reduces the freezing point of batched water in concrete and accelerates cement binding. As a result, this leads to an increase in the strength of early compressive strength and allows to shorten the care period under reduced temperature conditions. The admixture also has a plasticizing effect, thanks to which, with a constant water-cement ratio, the mix has higher liquidity than non-admixture concrete.

Application:

The REMI-FROST (BV) allows you to perform concreting at a reduced ambient temperature.

Application rate:

Recommended application rate: 0.2-2.0% to the weight of the binder.

REMI-FROST-45 (BE)

Admixture accelerating the binding time



Properties:

REMI-FROST-45 (BE) is an admixture that accelerates cement binding time, which is especially recommended for use at low air temperatures. The introduction of REMI-FROST-45 (BE) into the concrete mix reduces the freezing temperature of the water, which allows the concrete mix to be made at an air temperature of -10°C without inhibiting cement hydration. REMI-FROST-45 (BE) increases early compressive strength of concrete. The admixture also acts as a corrosion inhibitor for reinforcement steel. REMI-FROST-45 (BE) reduces the drying of fresh concrete, thus decreases the degree of shrinkage. The effective interaction of REMI-FROST-45 (BE) on the concrete mix is achieved both by using Portland cement without additives and blast-furnace cement.

Application:

It acts as an admixture accelerating the time of cement binding in production at reduced temperatures:

- concreting under winter conditions,
- prefabrication.

Application rate:

Recommended dosage 0.2-2.5% by weight of binder.

The application rate depends on (but is not limited to) the type of cement, ambient temperature, installation time, and care method. When concreting in winter, it is recommended to use clean Portland cement due to the faster dynamics of strength gain.

It is recommended to mix the product before use.

ADMIXTURES FOR READY-MIXED CONCRETE, PREFABRICATION, ARCHITECTURAL CONCRETE

PURCRETE-DF

Reducer-deaerator decreasing concrete porosity



Properties:

PURCRETE-DF reduces the volume of pores in the concrete mix, contributing to a smooth surface of the hardened concrete.

Application:

It is recommended especially for high-quality concrete, and liquid and concrete mixes, where a smooth surface is required after hardening.

Application rate:

Recommended dosage 0.2-0.8% by weight of binder.

It depends on (but is not limited to), the reactivity of the cement and the grain size curve.

Before applying the admixture, you are recommended to make trial batches.

REMIPLAST-M36

Admixture for plasticizing and aeration mortar



Properties:

Mortar based on this admixture has:

- Very good working properties thanks to proper mortar aeration.
- Very good adhesion to the ground in combination with the lack of flow effect.
- Very good workability.
- At a much higher application rate, it allows extending the working time.

Application:

REMIPLAST-M36 is designed for the production of ready-mixed mortars produced on site and in concrete production plants.

Application rate:

Recommended application rate: 0.2-0.4% of cement weight.

To achieve a longer working time, the recommended application rate is 0.8-1.0 cement weight.

The application rate depends on (but is not limited to) the composition of the mortar, the grain size curve, and the reactivity of the cement.

The admixture application rate may vary depending on the ambient temperature.

Testing is recommended before using the admixture.

It is recommended to mix the product before use.

Surface protection agents

Depending on the intended purpose, surfaces are exposed to various types of factors, such as organic pollutants, chemical substances, atmospheric conditions, therefore, an extremely important stage of surface treatment is its proper protection against harmful factors that occur in an environment. To protect concrete surfaces, you should use sealers, which at the same time improves the appearance, giving an intense colour, strengthens the structure and protects against the harmful effects of frost and de-icing salts.



Development of sealers by generation (I to III).

SILEX-GLOSS

Primer to reinforce and seal concrete with shiny "wet surface" effect



Properties:

It is a concrete primer and sealer. After drying, it gives the surfaces a durable, fresh look, creating a glossy coating that does not turn yellow and is resistant to weather conditions. Important factors that ensure durability and effectiveness include:

- the effect of a shiny "wet surface";
- resistance to UV radiation and de-icing agents.
- clear colour deepening,
- Hydrophobization and strengthening of the substrate.
- facilitated cleaning of the protected substrate.

Application:

SILEX-GLOSS is designed to protect grey and coloured concrete, all types of architectural concrete, external concrete and other visible concrete surfaces. It should not be used on surfaces sensitive to organic solvents.

Consumption:

120-300 ml/m² (per layer). You should perform tests to determine the consumption and performance rates.

SILEX-MATT

Primer to reinforce and seal concrete with matt "wet surface" effect



Properties:

It is a concrete primer and sealer. After drying, it gives the surfaces a durable, fresh look, creating a matt coating that does not turn yellow and is resistant to weather conditions.

Important factors that ensure durability and effectiveness include:

- with a matt "wet surface" effect.
- resistance to UV radiation and de-icing agents.
- clear colour deepening,
- Hydrophobization and strengthening of the substrate.
- facilitated cleaning of the protected substrate.

Application:

SILEX-MATT is designed to protect grey and coloured concrete, all types of architectural concrete, external concrete, and other visible concrete surfaces. It should not be used on surfaces sensitive to organic solvents.

Consumption:

120-300 ml/m² (per layer). You should perform tests to determine the consumption and performance rates.

REMISIL-CI

Impregnating agent, intensifying dyeing, especially recommended in the production of washed concrete



Properties:

It is a sealer for concrete based on dispersion of polymers in water. After the application of REMISIL-CI, the resistance of concrete products to environmental factors is clearly improved. Surfaces covered with sealer show high resistance to liquid penetration. REMISIL-CI is not visible on the treated surface and does not give a gloss effect.

Application:

It has been developed specifically for use on concrete products such as paving stones, curbs, paving slabs, and architectural concrete elements. It is particularly useful for use on hardened and absorbent substrates. With REMISIL-CI, both new and old concrete products can be permanently protected from the effects of weather conditions.

Consumption:

150-250 ml/m², depending on the surface structure and substrate absorption.

REMISIL-SI

Reinforcing sealer for concrete and screed with hydrophobic properties



Properties:

Prevents the ingress of contaminants.

Advantages:

- ready to use.
- does not contain solvents.
- hydrophobic.
- strengthens the surface.

Application:

- for strengthening used concrete and screed surfaces.
- as a protection against evaporation on fresh concrete surfaces.

Consumption:

Depending on the absorption rate of the substrate and the method of application, approx. 0.15-0.55 kg/m².

REMISIL

Solvent-free concrete sealer



Properties:

REMISIL is a sealer for concrete based on dispersion of polymers in water. After applying the agent, the resistance of concrete elements to weather conditions is improved. The surface is protected against liquid impurities that do not penetrate the concrete structure. After drying, REMISIL forms a transparent coating on the covered surface, giving it a fresh look. The preparation is resistant to weather conditions and UV radiation and does not turn yellow. After using REMISIL, surfaces protected with the sealer show increased resistance to chlorides.

Application:

REMISIL is applied to fresh and bound concrete surfaces and prefabricated elements, including paving stones, curbs, paving slabs, and architectural concrete. It is also suitable for sealing of brick walls. In particular, coloured concrete products acquire a fresh appearance, i.e. the colour of the external surface becomes more intense and slightly shiny. Do not use the product on specially sanded and polished surfaces due to the risk of streaks. REMISIL can also be used to prevent the growth of efflorescence on fresh concrete. Apply the preparation in thin layers and evenly over the entire area after approx. 12 to 14 hours after hardening of the surface.

Consumption:

80-140 ml/m², depending on the surface structure and substrate absorption.

REMISIL-HE

Sealer for concrete exposed to oils



Properties:

It is a sealer for concrete based on polymers. After the application of REMISIL-HE, the resistance of concrete products to environmental factors is clearly improved. Surfaces covered with this agent show high resistance to the penetration of liquids, especially oils, which can be easily removed with suitable materials (sand, sawdust). REMISIL-HE is not visible on the treated surface and does not give a gloss effect.

Application:

REMISIL-HE has been developed specifically for use on concrete products such as paving stones, curbs, paving slabs, and architectural concrete elements that may be exposed to oils. It is particularly useful for use on hardened and absorbent substrates. With REMISIL-HE, both new and old concrete products can be permanently protected from the effects of weather conditions.

Consumption:

100-300 ml/m², depending on the surface structure and substrate absorption.

REMISIL-TOP

Impregnating agent, intensifying dyeing, especially recommended in the production of washed concrete



Properties:

Acrylate-based product. It improves the chemical and physical strength of the surface, in particular the resistance to frost/de-icing salts and the cleaning properties of concrete and mineral substrates.

Application:

REMISIL-TOP is an agent intended for use on wet surfaces in the production of concrete products. It reduces algae and moss growth to a minimum, improves discoloration, and increases colour fastness. It is particularly recommended for the production of washed products with a weather barrier, façades, and coloured concrete products.

Consumption:

80-150 g/m², depending on the surface structure and substrate absorption. You should determine the consumption rate of the preparation by performing a preliminary test.



Agents for cleaning and renovation of concrete surfaces

Concrete surfaces become dirty during construction work and everyday use. Their aesthetics are deteriorating. In order to restore the surface to its original values, you can use special-purpose cleaning and renovation products.



The effect of renovation works on concrete surfaces.

ASO-R005

Concentrated preparation for the removal of mineral impurities.
Cleaning agent for paving stones, clinker, etc.



Properties:

ASO-R005:

- is a highly concentrated, liquid cleaning agent.
- does not contain solvents,
- leaves no residue.
- dissolves bleed water, residues of mortars, concrete and lime and limestone efflorescence.

Application:

ASO-R005 is used to wash surfaces from residues of mortars, bleed water, and lime efflorescence from both concrete and ceramic surfaces.

Consumption:

Depending on the degree of soiling and mixing ratio, approx. 250 ml/m².

BICOLOR

An agent for the renovation of already laid, coloured paving stones and vibro-pressed elements



Properties:

BICOLOR is a polymer-modified binding agent, used to renovate and refresh the colours of already laid paving stones. BICOLOR compensates for differences in colour and surface discolorations and damaged spots become invisible due to the deepening of colours.

Application:

BICOLOR is an agent used only to produce a colour repair coating. REMICOLOR liquid pigment is used to prepare the right colour.

Application rate:

- 50-60 g/m² of BICOLOR in the ready-to-use mix.
- 25-30 g/m² of REMICOLOR in the ready-to-use mix.
- 300-400 g/m² of the ready-to-use mix.

RENOGAL

Algae and moss cleaner. Biocidal product.



Properties:

RENOGAL is a solution that acts against surface fouling by algae, mosses and fungi. It destroys the existing growths and inhibits their further growth. The product can be used on all mineral surfaces.

Application:

RENOGAL is a ready-to-use liquid product (water solution) with a fungicidal effect, used to maintain and protect stone products, masonry structures, or construction materials.

Consumption:

300-500 g/m² (solution) as required.

SCHOMBURG in the media

Website

Organized in a user-friendly manner, our website available at www.schomburg.pl allows you to easily navigate the SCHOMBURG product range. In addition to the highly efficient search function and convenient consumption calculator, there are many other useful functions and tidbits waiting for you.



Facebook

Like our Facebook page and learn more about current events, ongoing product offerings, promotions, and other SCHOMBURG-related news.



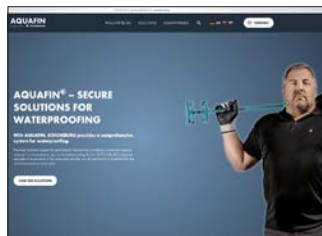
LinkedIn

Like our LinkedIn page and contact us. We inform you in an interesting way about current topics and new products from SCHOMBURG.



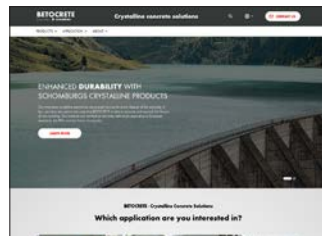
aquafin.com

Everything related to construction, waterproofing and repair. Here you can find interesting promotions and information about the use of our products – you should definitely take a peek!



betocrete.com

In the field of concrete technology, we provide interesting technical information, application overview, and much more.



YouTube

Subscribe to our YouTube channel SCHOMBURG - Poland and check out our wide selection of videos. The range is divided into different products and areas of application; helpful and informative videos are available in different languages.



For more product information, please ask our local Technical and Commercial Advisors of Schomburg Sales Network – Concrete Technology or consult the Sales Department – you can contact us at www.schomburg.pl, “Schomburg Sales Network – Concrete Technology” tab.

The SCHOMBURG Group develops, produces and distributes building product systems for the areas of:

- Waterproofing and repair of buildings
- Tiles/natural stone/screed application
- Ground protection/floor coating systems
- Concrete technology

For over 80 years SCHOMBURG's development competence has been a recognised feature in both the domestic and the worldwide marketplace. Building product systems that are produced in-house are highly prized around the world.

Experts value the quality and the efficiency of building product systems, the services and therefore the core competence of the group of companies.

To meet the demanding requirements of an ever-changing market, we continuously invest in the research and development of new and already existing products. This guarantees an ever increasing product quality to the satisfaction of our customers.

SCHOMBURG Polska Sp. z o. o.
ul. Skłęczkowska 18a
99-300 Kutno
tel. +48-24-254-7342
faks +48-24-253-6427
email biuro@schomburg.pl
www.schomburg.pl
www.schomburg.de
BDO 000030309

