

# INSIGHT

The SCHOMBURG group company magazine



19 | 2014

## The SCHOMBURG swimming pool forum in Berlin

On the 20th and 21st March 2014 around 100 delegates were updated on current trends used in swimming pool construction, during the course of the second SCHOMBURG swimming pool forum.



### Environment protection

Not only sustainability of existing structures. SCHOMBURG fulfils important environmental criteria.



### Everything in colour

New production line for tinting single packages permits individual colour flexibility for INDUFLOOR® products.



### AQUAFIN®-RS300

The self cross-linking water-proof membrane with versatile application possibilities, sets new benchmarks in structural waterproofing.

# Index



**04** AQUAFIN®-RS300 -  
new benchmarks for mineral-based  
waterproof slurries

**06** Structural waterproofing brochure

**06** New smoothing compound -  
safely levelled with SOLOCRET-50!



**07** »Everything in colour« - new production line  
commissioned for tinting single packages permits  
individual colour flexibility for INDUFLOOR®

**08** SCHOMBURG ICS -  
Intelligent Construction Systems



**09** SCHOMBURG supports gold  
medal winner - German tile  
fixer wins at  
»WorldSkills 2013«

**09** POS support

**10** Professional instrumentation  
in R&D

**11** New brochure on seamless  
epoxy resin systems



**11** Over 40 market partners greeted at  
our annual export conference

**12** SCHOMBURG focuses on protecting  
man and the environment



**14** Winner of the »Swimming pool  
of the year« chosen in Berlin

**15** Architects' forums in Eastern Europe is  
met with great response



**16** The second swimming pool forum  
in Berlin

**18** SCHOMBURG App now also  
available for iPad

**19** AQUAFIN®-i380 - injection cream for  
retrospective horizontal barriers

**20** First GEPOTECH® seminar successfully  
carried out in Vietnam



Dear readers,

You are holding the latest Insight in your hand – the SCHOMBURG group's company magazine.

As my father published the first Insight in 1993, this sort of information was a modern instrument of company communication. At that time certainly nobody thought that Insight would become a medium so rich in tradition. Even though we have found our way into long established digital communication, also serving you via our website, our Newsletter, our Facebook page and our YouTube channel, the printed format for information is highly significant for us.

Written for you by our employees, we pick on group themes in order to present short and interesting topics to you. That was always the case. Today's Insight is however still a new start. The current editorial team has honed the layout and wants to make Insight even more interesting and exciting.

We look forward to suggestions and tips and wish you enjoyment whilst reading.

A handwritten signature in black ink, appearing to read 'R. Schomburg'. The signature is fluid and cursive, with a large, sweeping flourish at the end.

Ralph Schomburg



# AQUAFIN®-RS300 – new benchmarks for mineral-based waterproof slurries

SCHOMBURG sets new benchmarks with the further development of the self cross-linking, reactive setting waterproof barrier AQUAFIN®-RS300. Our mineral-based waterproof membrane offers users an enhanced spectrum of application – from bonded waterproofing beneath tiles to hybrid structural waterproofing.



This waterproofing membrane with its multi-faceted range of uses, is the result of an innovative and analytical market development. The new waterproof membrane exhibits unique hybrid properties. The high performance spectrum encompasses use as structural waterproofing in ground contact areas, building skirt areas, confined-area waterproofing including bonded waterproofing beneath wall and floor tiling in heavy duty wet interior and exterior areas such as swimming pools, swimming pool surrounds and terraces.

Due to its self cross-linking behaviour, AQUAFIN®-RS300 is not reliant on laboratory conditions beyond the 20 degree mark and 50% relative humidity. The intelligent cross-linking system of the reactive slurry chemically draws water from the waterproof film and as a result, dries out independent of the weather conditions. Laboratory data collected shows that even at +4 °C and 90% relative humidity, it dries out within 24 hours. These product properties allow a

tensile performance to be achieved only after one day, whilst classical mineral-based slurry systems may need up to 28 days.

## HYBRID STRUCTURAL WATERPROOFING

With structural waterproofing in contact with the ground, the mineral-based reactive waterproof membrane offers a multi-faceted application spectrum with hybrid properties as it can also be used in thick coats, similar to high build bitumen coatings. Here the pleasant and effortless application performance of the bitumen free reactive waterproof membrane offers clear advantages to the applicator. The known problem of pinhole formation with bituminous waterproof membranes under strong sunlight is almost eliminated.

In addition, fast track construction - often required - is achieved so below grade structures can be back-filled and adjoining coatings completed early. As a rule this has not been a problem in the summer months

but in damp or cold times of the year there were often delays with mineral-based waterproof membranes and high-build bituminous waterproof membranes.

## COMBINED WATERPROOFING – MINERAL-BASED COATING / BITUMINOUS WATERPROOF MEMBRANES

A well established construction method is a waterproofing detail with a mineral-based waterproofing system followed by surface waterproofing with a high-build



AQUAFIN®-RS300 – smooth application and high grab.

bituminous coating. At the wall to foundation slab junction, penetrations and joints, a mineral-based waterproof slurry is used to protect against rear moisture penetration. In these areas, waterproof tapes and gaskets are frequently incorporated. Here the mineral-based reactive waterproof membrane offers the advantage of rapid cross-linking, when compared to standard waterproof slurries, which, due to their methodology, only harden by drying and loss of moisture. AQUAFIN®-RS300, on the other hand, easily dries even in the absence of air. In practice this means that the surface applied waterproof membranes can dry safely and without delay when climatic conditions are unfavourable.

The same goes for the building skirt. In accordance with guidelines, waterproofing must be extended to 30 cm above ground level. It is also possible to carry out additional works, such as rendering or dressing (e.g. EW1), in a timely manner.

#### WATERPROOFING ACCORDING TO DIN 18195

Currently the use of mineral-based surface applied waterproofing systems is not covered in DIN 18195.

AQUAFIN®-RS300, as a waterproof membrane, has been certified (General Technical Certificate) with official technical approval for this use and is therefore admissible but must be contractually declared as a deviation from DIN 18195. In this way it is possible to produce a comprehensive mineral-based waterproof membrane, which meets the terms of DIN 18195. Due to rapid construction progress, protective layers such as e.g. perimeter insulation, can be installed early and the basement or below grade structure is back-filled.

#### WATERPROOFING CONTAINERS

Mineral-based waterproofing systems have proved their worth for centuries, waterproofing containers from the inside. The main problem with containers

however are time consuming forced ventilation measures with classical waterproofing products. As a rule temperatures from approx. +10 °C at 75-80% relative humidity are met. The new waterproof membrane from the East Westphalian building product specialist has an advantage due to its reactive cross-linking, as the necessary drying phase can be noticeably reduced. Project times and costs for condensing driers etc can be noticeably minimized.

#### INTERNAL WATERPROOFING

When carrying out internal waterproofing, the pores in the substrate are completely filled with water and the wall temperature is generally low. There is mostly a high humidity in the internal area. In this case, the cross-linking process of standard waterproof slurries is very slow.

Installation of restoration plasters too early can lead to hollow areas and cracks in the plaster and consequential leaks in the waterproof membrane are developed. Even in this application, the rapid drying of the waterproof membrane offers the advantage of rapid construction progress together with an increase in application security. This leads to a minimization of damage risk.

#### BONDED WATERPROOFING WITH TILES

Carrying out bonded waterproofing is often subjected to difficulties influenced by climatic conditions. Surrounding water vapour saturation especially in closed



to form a film, even in the absence of air. The consequences are exceptional advantages for the applicator and security for the user with sustainable continuation of use within the building. In this way with structural waterproofing measures, insulation panels can be bonded only after six hours and the building structure can be back-filled 24 to 48 hours later, dependent on site conditions. Detailing at transition areas can be optimally carried out with waterproof tapes and gaskets. AQUAFIN®-RS300 dries to form a resilient and seamless film within a short time, even in the absence of air, as is the case beneath waterproof tapes. Even with health and safety issues, the use of AQUAFIN®-RS300 is a good decision. The exceptional tensile values, high stability under water pressure and excellent water-tightness values cater for secure application and performance. 60% greater flexibility compared to similar products as well as the ability to

---

## AQUAFIN®-RS300 – Security in application and use

---

containers or low lying swimming pool tanks, necessitate laborious and time consuming forced ventilation measures with classical waterproofing products. When using AQUAFIN®-RS300, these are noticeably minimized. Detail formation at transitional areas can be optimally carried out with waterproof tapes or gaskets.

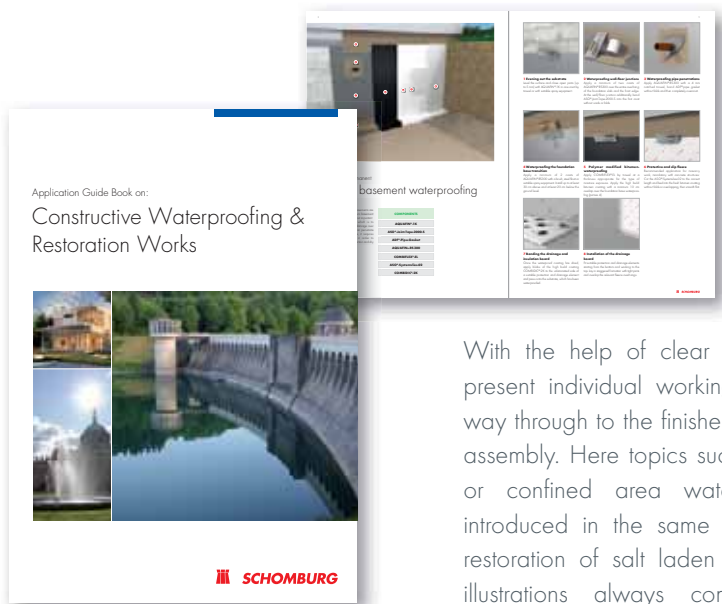
AQUAFIN®-RS300 dries after a short time

install tiles and other finishes early, sum up the complexity of this innovative waterproofing product. These advantages combined with exceptional application properties, such as easy, creamy smooth trowelability, the possibility to adjust for brush or spray application herald a new unerring age of structural waterproofing.

■  
Stefan Flügge

# Structural waterproofing brochure

»Construct.Waterproof.Competency« - presented hot off the press. Our brochure can be summarized in this way »Application Guide Book on: Constructive Waterproofing & Restoration Works«. Various system solutions are introduced inside.



With the help of clear illustrations, we present individual working steps all the way through to the finished waterproofed assembly. Here topics such as basement or confined area waterproofing are introduced in the same manner as the restoration of salt laden substrates. The illustrations always come from real

application showing compatible system solutions. Examples are expanded through a multitude of further information such as regulations, exposure conditions and an extensive glossary. Their own chapters have been devoted to the topics »substrate preparation« and »Joint Tapes«. With system solution depictions the brochure will appeal not only to applicators but also to Architects and Planners as an interesting working reference. It is worthy to note that there is a guidebook in nine languages (German, English, French, Italian, Dutch, Slovakian, Czech, Polish and Croatian).

Jens Danke

## New smoothing compound - level securely with SOLOCRET-50!

SOLOCRET-50 from SCHOMBURG offers applicators extraordinary product properties. The levelling compound is ready to receive finishes after three hours only. Furthermore the rapid hardening smoothing compound exhibits great non-sag performance.

Levelling irregularities can be carried out at thicknesses from 2-50 mm in one application on walls and floors. The smoothing compound is for use internally, externally and also in wet areas. It wins with its low consumption through the use of special lightweight fillers. This provides for a crystalline binding smoothing mortar, which is simple and smooth to work. It has a special ternary binder system, so by the time SOLOCRET-50 is ready to receive finishes, it contains no excess water, which

would delay setting and promote shrinkage.

Once hardened the smoothing compound demonstrates low shrinkage and dimensional stability. Despite the rapid curing nature, it has a long working life. Application is by trowel or splatter. SOLOCRET-50 can be used on many substrates.

Wilhelm Kreiling-Dreyer



SOLOCRET-50, easy application even at greater thicknesses.

# »Everything in colour« - New „in-pail-tinting“ line commissioned for colouring single packs of INDUFLOOR® products



Dosing



Mixing

Following many years in the project phase, we were able to send the production plant for filling single packaging units of our INDUFLOOR® coatings, on to the production line. The project team comprising technical, production,

With the newly obtained flexibility, in comparison to conventional mixing plants, it is now possible due to a tightly controlled process, which is fully computer controlled from procurement of starting materials, dosing of the formulation components

## INDUFLOOR® enables a new flexibility

laboratory and market management subsequently stated that the goal of the project, to supply customers with high quality products in the shortest time, was completely achieved. And »everything in colour«.

Fully matched to their coating colour requirements, the customer is spoiled for choice with approx. 100 colours, formulated in the laboratory using state-of-the-art colorimetry and added to the dosage control software.

through to the mixing technology. Together with a close relationship with Quality Control, the process guarantees the highest possible finished quality of INDUFLOOR® coatings. ■

Hermann Schulte



Colorimetric control

# SCHOMBURG ICS – Intelligent Construction Systems



The SCHOMBURG ICS division made its name and reputation in the previous year. The abbreviation ICS stands for technical Know How, competency in the market and innovative determination. A key aspect of research and development was with reactive surface protection systems. The project team, comprising product management and development, focussed on the problems professional applicators face with reactive resin coatings. This sparked the idea to develop an epoxy

the desired RAL tone, which was hush hush at the start. It is frequently encountered that the substrate, the room and material temperatures deviate from those stated in the technical data sheet and that the coating material reacts differently. Hence the time given for receipt of foot traffic, is different. At high temperatures this timing is earlier than at lower temperatures. This can forcibly lead to nullification of the applicator's time management, despite their high levels of experience and



Component A before addition of component B.

---

## ICS – the intelligent solution with Know How

---

resin based primer, which would also serve as a wearing coat. This relieved the professional applicator and their employees, who hold the rake, of the planning of subsequent work such as post installation of a top layer, sealing, anti-slip build-up or the incorporation of movement joints. This material was to show its intelligence in the form of colour changes in

subsequent applications must be delayed. The process security that this coating offers, is also intelligent. The installer can know the drying state of the area, irrespective of the surrounding conditions, and therefore know the construction progress exactly. Only once adequate drying has been achieved will the primer reach its originally ordered RAL colour. As soon as this is reached, the

area can be trafficked by foot or further work can continue. SCHOMBURG ICS shows that this intelligent solution not only supports the experienced applicator and offers Know How but that they are also available to give advice as an experienced project partner. ■

Denise Mahlmann



# SCHOMBURG supports gold medal winner – German tile fixer wins »WorldSkills 2013«



World champion Björn Bohmfalk (second from right) with our Managing Directors Alexander Weber (left) and Ralph Schömburg (right). Also pictured is German champion Felix Kranz (second from left) and the Jogi Löw of tile fixers "National Coach" Günther Kropf (centre).

The gold medal for the skill of »tile fixer« at the previous year's World Skills, which took place from 2nd to 7th July 2013 in Leipzig, was landed by 22 year old Björn Bohmfalk from Großefehn in lower Saxony. He is the first tile fixer to be named European champion and world champion at the same time. After the competition Bohmfalk was happy and proud to have solved the difficult task. After many hours of training successfully completed, he felt best

equipped. »Nevertheless I never expected gold. It is simply incomprehensible.« During the four day competition the 24 tile fixers had to tile two walls and a floor. On one wall was the Brandenburg gate with its columns representing a building frontage. On the second wall was a map of Germany in the national colours of black, red and gold. Along the line of the borders, many challenging cuts were to be made. To finish, a floor still had to be cut and laid with the

text »2013«. During the exhibition at the start of last year in Munich, Björn Bohmfalk and his team also visited our exhibition stand and he was greeted by company management. Equipped with a SCHOMBURG promotional pack, he could successfully prepare for the tournament.

For years we have supported the tile fixer's trade association and therefore help achieve such successes. With 1004 participants, »World Skills 2013« in Leipzig was the largest trade competition of all time and, under the patronage of Federal Chancellor Angela Merkel, took place again in Germany for the first time in 40 years. Competitors from 53 countries put on their best performance and fought for gold, silver and bronze in 46 official contest disciplines as well as three presentation contests.

The best of the best from the whole world, which could be no older than 22, showed their extremely professional abilities. ■

Jörg Pohlmann

## POS support

SCHOMBURG expanded its POS support from the beginning of the year. With immediate effect, all market partners and selected distributors can avail themselves of the SCHOMBURG pallet display as part of the POS sales action. This distinctive »SCHOMBURG water droplets look« designed display allows various SCHOMBURG products to be attractively presented. Heavy packaging

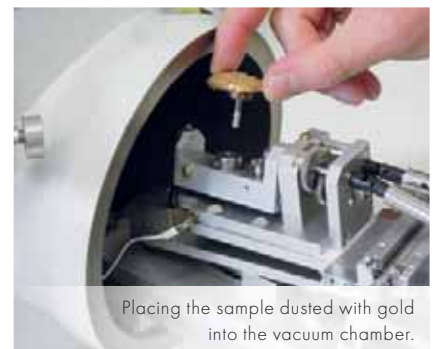
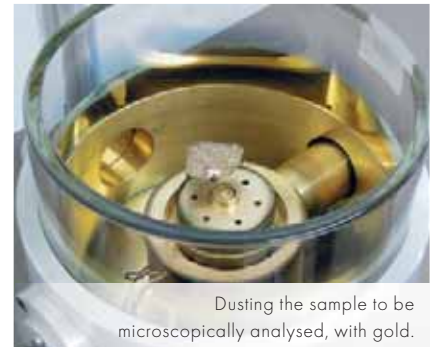
such as buckets and bags can be placed beneath. There is place for smaller packaging up top, such as e.g. small bags, silicone cartridges or waterproof tape.

The display can be built in under 5 minutes without any tools. It is available for Euro and US pallets. ■

Jörg Pohlmann



# Professional instrumentation in R&D



The pictures taken at 40 times magnification with the electron microscope of the SCHOMBURG analytical department show, in an impressive way, the difference between a SCHOMBURG restoration plaster and a common plaster/render. The electron microscope, which can magnify up to 150,000 times, shows its particular strengths even at low magnification, which in comparison with an optical microscope

which damaging construction salts can be stored. In normal renders this exact process leads to the salt crystallisation with an increase in volume and consequential efflorescence and de-lamination. With restoration plasters they allow the salts to crystallize in the air pores without causing damage.

With the aid of these pictures, our development team were able to optimize the pore structure, which resulted in a new innovative restoration plaster that will hit the market in 2014.

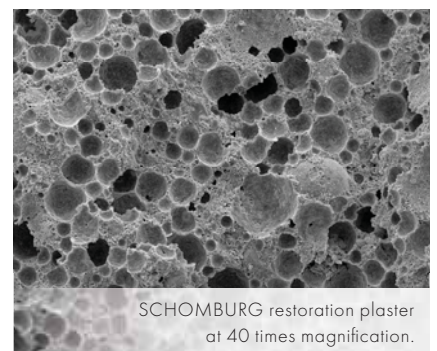
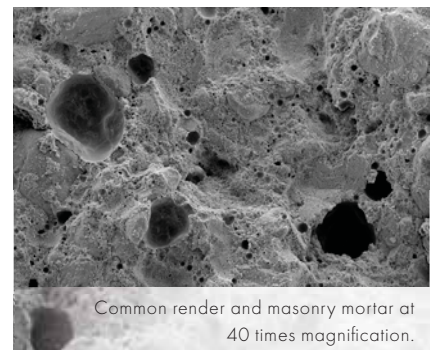
André Schmeding

---

## Electron microscopy – not only for high magnification

---

reproduces sharply a considerably larger area and also with much clearer contrast. The deciding difference between a restoration plaster and a normal render is the extremely high air pore content and the consequentially greater pore volume, in



# New brochure for seamless epoxy resin systems

Seamless epoxy resin systems are the ideal solution for trade, commerce and industry when the topic is jointless coating systems. "Secure from the base" is the claim, which we want to implement with our new INDUFLOOR® brochure.



The brochure clearly shows effective solutions for special applications. We begin by introducing the system primer INDUFLOOR®-IB1275 and its different areas of application. A matrix clearly illustrates the necessary tools and

installation advice for the system build-ups of the various applications. In addition to pack sizes of the system components, the properties are described, which help with assist in the decision making process. An overview of available colours finishes off this brochure.

With these system solution illustrations, the brochure is not only aimed at applicators but is also an interesting reference work for Planners and Architects. The brochure can be downloaded from the website [www.schomburg.com](http://www.schomburg.com)

Denise Mahlmann

# Over 40 market partners greeted at our annual Export conference

As part of the international marketing conference in April 2014, we were able to greet over 40 guests from more than 25 countries. In addition to current information on the sales and marketing topics, the international sales team also presented current product innovations, both theoretically and practically.

Amongst the guests were senior management and managing directors of SCHOMBURG subsidiaries, joint venture affiliated companies and other international distribution partners. After two exciting days where discussions



Over 40 international market partners came to the annual Export conference in Detmold.

rained and experiences were swapped, the delegates took with them many new impressions and ideas for the successful

marketing of our products and systems in their own sales regions.

Holger Sass

# SCHOMBURG focuses on protecting man and the environment

Sustainability – not only of existing structures, but also environmental protection. This is the SCHOMBURG group's focus. To achieve this, a range of our products underwent strict testing.



Solar energy system on the roof of our production building.

These tests resulted in various certificates and approvals such as the EMICODE® seal. EMICODE® is a protected trademarked name identifying installation products, adhesives, and construction products that offer the greatest possible health safety factors against indoor air contamination. The basis of the EMICODE® system is an exactly defined test chamber examination to DIN ISO 16000 and strict categorization criteria. The products tested are free from solvents and hazardous materials. Many SCHOMBURG products already

carry the EC1 logo or even EC1-Plus. SCHOMBURG consciously undertook these harsh tests and burdens to provide optimum protection to applicators and end users. Also SCHOMBURG products, which have the VOC-France identification, have special environment friendly properties. The emissions limits are stricter than the US LEED values for VOC emissions. SCHOMBURG sets new benchmarks with regard to the requirements for sustainable construction and economy. To this belongs particularly the health and

comfort of the end user. This is, above all, assured through the use of low emission products.

In addition to the existing low emissions levelling compounds SOLOPLAN®-30 and ASO®-NM15, SCHOMBURG now offers a complete system for the installation of tiles, which excel with the highest classification EC1 or EC1-Plus as "Extremely low emissions" according to GEV criteria.

From multi-purpose primers through levelling compounds, waterproofing products through tile fixing products with

the low dust flexible adhesive LIGHTFLEX® to grouting with CRISTALLFUGE®, completing the range, SCHOMBURG laid down a further milestone in early 2013. Through our membership of the DGNB, we made a clear commitment to the production of environmentally friendly building products. The German Association for Sustainable Construction - DGNB for short - was founded in 2007 by 16 initiators from varying specialisations within the construction and real estate industry. The goal was to stimulate sustainable building stronger into the future. Today the association has over 1200 members throughout the world.

Sustainability is more than just a word for the DGNB: the members understand the commitment of the whole association to adopt responsibility for current problems such as climate change and the shortage of resources instead of passing them on to future generations. Sustainable buildings can make a decisive contribution. According to the Federal minister for the environment, around a third of Germany's resource consumption is caused by buildings. Waste accumulation or CO2 emissions are similarly valid. Targeting high quality demands when constructing and using buildings, strengthens the positive effects on the community and nature and minimizes the negative effects. The goal of

the DGNB is to plan, to operate and to use the urban environment to the health of all so that the interests of future generations do not suffer - as far as possible without noticeable restrictions on the interests of the current generation.

#### MODERN POWDER PACKAGING FOR EVEN BETTER QUALITY

For a variety of products, plastic bags are also of ecological merit. Hygroscopic and, above all, rapid setting powder products need clean, airtight packaging, which is protected from damp. This protection is afforded by our plastic sacks when compared with conventional paper bags. As these are also equipped with a plastic inner liner, we even achieve an improved eco-balance with our packaging. In the previous year, another packaging line was commissioned, so that even more products are available in plastic bags. In addition to those



Ralph Schomburg appraises the expansion of the plastic bag filling line.

reduced to a minimum. Moisture penetration and the resultant lumping of products are almost eliminated. There is no dusty storage caused by non airtight valves and the risk of damaged

### Sustainability is more than just a word.

advantages in the filling process, this innovation offers advantages during storage and also when handling on the building site. As it involves a closed system, dust evolution during production is

packaging during transportation is reduced to a minimum. Long shelf lives as well as longevity of product properties are guaranteed with the new, ▶



SCHOMBURG fulfils important environmental criteria.

recyclable plastic bags and consequently give great customer value – for distributors worldwide and equally for installers.

## ENVIRONMENTAL PROTECTION IN PRODUCTION

The Detmold production plant was geared towards strict environmental protection. The practically emissions free

production plant is situated in a residential area and to the South, borders the strawberry fields of an agricultural business. A large proportion of the company's energy requirements are produced from their own solar panels.

Furthermore with the aid of an intelligent heat reclamation concept, waste heat

from the production process is used to heat the production buildings.

We have now collated SCHOMBURG's engagement in the protection of the environment and man, into a current brochure. This can be ordered via our Homepage. ■

Jörg Pohlmann

# Winner of the »Swimming pool of the year« chosen in Berlin

As part of the evening's activities at our swimming pool forum in Berlin, the winner of the »Swimming pool of the year 2013« competition was awarded a prize. Together with »Fliesen und Platten« magazine, we brought the competition into life last year. Under an exclusive ambiance, SCHOMBURG introduced the victor and company's who took part.

## The best three were featured in Berlin

First prize was won by Heidrich Tiling Ltd from Zernitz-Lohm. As a project owner, Dirk Heidrich, presented the new build swimming pool Inseipark in Hamburg-Wilhelmsburg and was pleased with the

victor's cheque for 10,000 Euros. The Inseipark swimming pool in Hamburg-Wilhelmsburg is the most modern swimming pool in the Hanseatic city of Hamburg. It concerns an architecturally energetic and efficient highly modern swimming pool design. Good planning between the planners, bs2 Architects Ltd and the client combined with the installation work from tiling master craftsmen were highlighted. In second place came Fliesen Lepping GmbH & Co. KG with the new build of the combined indoor/outdoor pool facility »Cabrioli« in Lippstadt. In third place was the tiling contractor Schmelzer GmbH with the »Alhambra on the fringe of the Bliesgau«. Host of the awards ceremony, Head of facilities management, Marcus



Kuczer and Michael Schmidt-Driedger, technical editor for Fliesen und Platten were congratulated with a tour voucher for the capital city. ■

Britta Welker



# Architects' forums in Eastern Europe met with great response

At this time, we are undertaking two large projects in Belarus. We are expanding our international references with the Aquapark in Minsk and the Freestyle centre (also in Minsk). As part of these projects, in June 2013 we arranged a swimming pool forum in the »Johannes Rau« business centre in Belarus. The topic focused on was waterproofing in combination with tiles in swimming pool construction. Guest speakers were also invited. Günter Schulze and Igor Sementsav from Agrob Buchtal reported on the build-up of different swimming pool edge details and introduced new product lines from Agrob



Site visit as part of the Architect's forum.

Buchtal Byaroza ceramic. Other presentations considered the topics »water treatment« and »standards«. In addition, international references from our »swimming



Aquapark, Minsk.

pool construction« project management were introduced. In conclusion to the interesting technical presentations, there was an animated discussion, where no question remained unanswered.

Among the almost 80 guests were Architects, Planners, Managing Directors of application companies and swimming pool and sauna companies. These were joined by a selection of representatives from public authorities and other official positions as well as various editors from the technical press. All guests voiced positive

opinions on the recently created function. On the second day of the forum, the Aquapark and freestyle centre in Minsk were visited.

The series of presentations was continued in the second half of the year with another forum in Kaliningrad. There, the topics »structural waterproofing«, »system build-up on balconies and terraces«, »swimming pool construction«, »waterproof concrete« and »GEPOTECH« were presented to Architects and Planners. ■

Andrej Tschalenko



Aquapark, Minsk.

# The second swimming pool forum in Berlin

Our swimming pool forum in Berlin took place on the 20th and 21st of March 2014. Around 100 delegates were updated about current requirements for companies involved in construction and swimming pools. The latest SCHOMBURG swimming pool forum came up with a number of top drawer speakers.



Visitors anticipated interesting seminars.



Johannes Bauer, SCHOMBURG project management.



SCHOMBURG Managing Director Alexander Weber (left) with moderator Burkhard Fröhlich.





SCHOMBURG project - rehabilitation centre in Luxembourg.

In Panorama 37 of the Park Inn Radisson Hotel in Berlin everything pivoted around public swimming pools. 120 metres above the Alexanderplatz, the guests and speakers discussed planning, construction and company perspectives on swimming

to share in his comprehensive treasure trove of experience and illustrated particular problem areas and appropriate solutions to apply. Johannes Bauer, from SCHOMBURG project management, reported on the

### Interesting presentations and exciting discussions

pools. SCHOMBURG had set the target to network better with the participants and ensure effective communication. The forum served as the perfect platform to achieve this. Erich Zanocco, officially appointed and sworn expert, from Freudenstadt, showed ways for the „trouble-free“ construction of swimming pools. He allowed the listeners

implementation of waterproofing measures in swimming pools with bonded waterproof membranes, which are created with reaction resins. Above all, the focus was on testing the waterproofing measures. He illustrated the possibility to dispense with destructive material thickness testing. He demonstrated the virtues of the electrically controlled waterproof system



Erich Zanocco - officially appointed and sworn expert.

DENSARE®-2002 from SCHOMBURG has such possibilities. Deputy Assistant Under-Secretary Hans-Dieter Hegner from the Federal Ministry for the Environment, Nature Conservation and Nuclear Safety gave a lecture on sustainable construction in Germany. Here he illustrated that sustainable building is more than just observing energy efficiency demanded, and introduced different evaluation and certification methods in his presentation. Architect Tobias Reckert from the Architects Veauthier Meyer agreed to a special feature. He presented on swimming pool renovation of historic buildings referencing successfully completed projects.



The SCHOMBURG team.

# SCHOMBURG App now also available for iPad

To have the most important information ready directly on the building site and during meetings with customers – with the SCHOMBURG App, you are now also always up to date with your iPad. The App can be downloaded from the App store.

»We have consciously developed a comprehensive App, which offers more than just product information«, according to Managing Director Ralph Schomburg. Positive feedback on the iPhone variant, encouraged us to also bring out an iPad version for the market.

The App impresses with a multitude of useful functions, which goes way beyond the provision of data.

The highlight of the App is an integrated consumption calculator. In comparison with other calculators, this offers exact results specific to products and considers information on application thickness, notched trowel size, joint width, joint length and tile size for calculating the surface area consumption. As a result, the user doesn't only get the total amount but also the appropriate amount of packaging required exactly. But that's not enough. You can find distributors, who stock the items, from the distributor list and, if desired, the distance from your current position.

Of course you also get all the necessary information to directly contact the SCHOMBURG technical team. With integrated EAN and an additional QR code reader, the user can exactly identify SCHOMBURG products and access relevant information (brochures, safety data sheets, technical data sheets and descriptions ...). To alternate, grab the different reference photos on the start page – a different photo appears with each start.

The App is a so-called native IOS-App. This is clear and highly user-friendly and offers improved speed compared with a

Web-App. The App is free from the App store. You can find a link at [www.schomburg.de](http://www.schomburg.de).

Katja Deppe



Friedrich-Karl Scholtissek, lawyer.

The lecture given by lawyer Friedrich-Karl Scholtissek, lawyer and associate lecturer for construction and architectural law, conveyed the title »Building contract law: best practice«. He also impressed the guests with practical demonstrations on an actually rather theoretical topic.



Exciting discussions during the lecture breaks.

Amongst other focal points on the agenda, there were water technology and project workmanship. The speakers talked about exceptional requirements and challenges. The two exciting days on the topic of swimming pool construction was hosted by Chief Editor of the DBZ (German construction magazine), Burkhard Fröhlich. Further information and photos on the event can be found on the home page of [www.schwimmbadforum.com](http://www.schwimmbadforum.com).

Jörg Pohlmann



Cover picture for the SCHOMBURG App.



# AQUAFIN®-i380 – injection cream for retrospective horizontal barriers

Injecting a horizontal barrier membrane without pressure, retrospectively – with AQUAFIN®-i380 that is not a problem. The new injection cream from SCHOMBURG is suitable for producing retrospectively applied horizontal barrier membranes in accordance with WTA data sheet 4-4-04/D against rising damp up to 95% moisture saturation in masonry work e.g. brick, clinker, lime-sand block, natural stone and including joint mortar.

AQUAFIN®-i380 is a secure solution for retrospective horizontal barrier membranes. The silane-based injection cream is applied without pressure and acts against rising damp in masonry work.

product specialist achieves full functionality at a saturation level of 95% even without pressure application.

The active ingredient is very finely absorbed via special manufacturing and does not

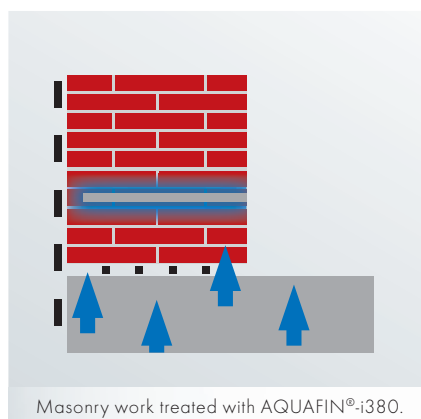
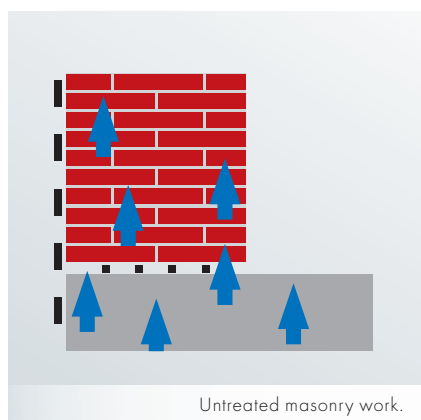
Over time, this leads to 100% saturation of the pores. A so-called self injection occurs. Following the reaction with the substrate, the capillary walls become water repellent, which prevents absorption and rising damp so the substrate dries out.

Stefan Flügge

## Highly functional without pressure injection

As a rule, classical silification solutions only work up to 60% moisture saturation when applied without pressure. The injection cream from the East Westphalian building

react with the water but exclusively with the substrate. The active ingredient is extremely hydrophilic, i.e. it loves water, so that it rapidly disperses in the water present in the substrate.



# First GEPOTECH® seminar successfully carried out in Vietnam



GEPOTECH® application demonstration on a flat roof in Vietnam.



Material application and waterproofed flat roof.

The first GEPOTECH® seminar in Vietnam took place in South East Asia in March. Customers from Hong Kong, Malaysia and Vietnam travelled to the seminar. The first part of the seminar took place on a building site in the Dong Nai province, 45 minutes by car from Ho Chi Minh City. As a rule, flat roofs in Vietnam are repaired once a year, as there are no good quality or long-lasting roofing products in Vietnam. Extreme rainfall causes considerable damage to buildings each year. The owner of the site, who took part in the practical training, calculated long term. He wanted a "Lifetime" roof coating for his building project and therefore opted for the ultimate product solution - GEPOTECH®. During the training, the 1,200 m<sup>2</sup> flat roof area of the 8,000 m<sup>2</sup>

large single family home was firstly primed with the barrier primer INDUFLOOR®-IB1248 and subsequently successfully coated with the spray applied polyurea coating GEPOTECH®-11/30. Coolie hats and a constant supply of fresh coconuts kept the seminar participants in a good mood on the roof despite the +35 °C heat. The second and theoretical part of the training session took place in the SCHOMBURG Vietnam building in Ho Chi Minh city. SCHOMBURG Vietnam Co. Ltd. is the newest trading company in South East Asia, which has been actively marketing SCHOMBURG products since 2013. ■

Albert-Johannes Schomburg



The SCHOMBURG Vietnam building in Ho Chi Minh City.

 **SCHOMBURG**

SCHOMBURG GmbH & Co. KG  
Aquafinstraße 2-8  
D-32760 Detmold (Germany)  
phone +49-5231-953-00  
fax +49-5231-953-108  
email export@schomburg.de  
www.schomburg.com

