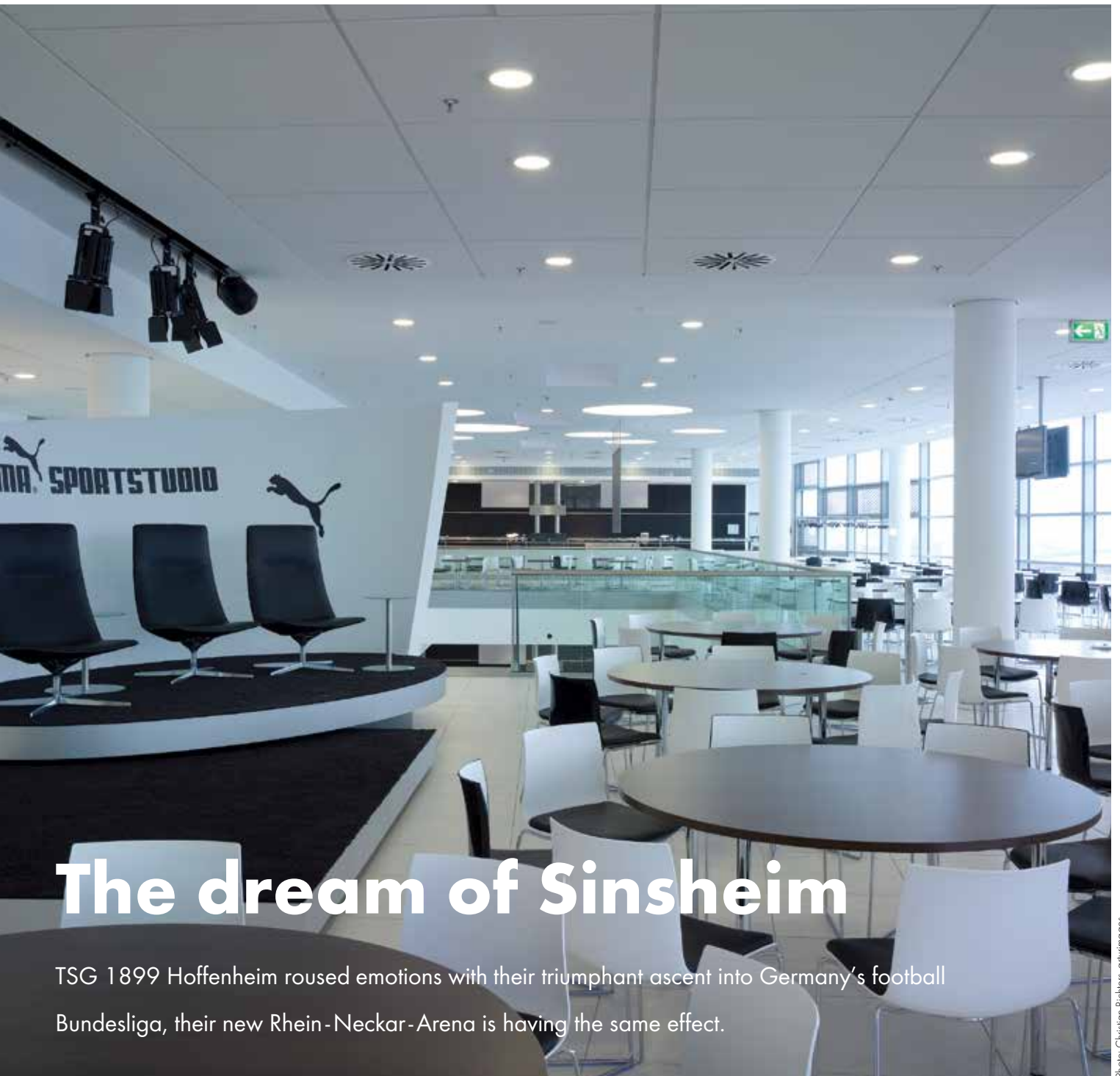




 **SCHOMBURG**  
*report* 01

1899 Hoffenheim

Rhein-Neckar-Arena



# The dream of Sinsheim

TSG 1899 Hoffenheim roused emotions with their triumphant ascent into Germany's football Bundesliga, their new Rhein-Neckar-Arena is having the same effect.

The inferno of Sinsheim – for the Hoffenheim fans it is the hope that the new Rhein-Neckar-Arena will embody this vision. The crowd is expected to bay and roar in the 30,150 seats, creating an atmosphere akin to that of a fiery cauldron. The stadium's owner, SAP co-founder Dietmar Hopp, commissioned general planner agn Niederberghaus & Partner with the construction of the arena, which was to become the future home of TSG 1899 Hoffenheim.

## **A roof that is both heavy and light**

At first glance, the stadium looks too cool and airy to resemble a furnace. Thin rings break down the structure, reducing its mass: the entrance plinth, the gallery above it, a central section with facade trusses, part glass, part expanded metal, above it the rear row of grandstand seating and the roof, which appears to be suspended slightly above the stand. The impression is nearly an illusion, because the roof weighs 3,400 tonnes and is supported only by slim steel braces. It is composed of a lattice frame made from white-painted hollow steel sections, which were assembled on site to form long beams and mounted onto the braces.

The pillars are situated behind the grandstand, a difficult solution from a static viewpoint. However, as a result the interior area is free of pillars and the spectators are given the impression that the roof is floating effortlessly above.

## **Luxury for pitch, fans and players**

The pitch is a perfect checkered green. To ensure that it stays this way, the architects have optimised the climate in the stadium: transparent polycarbonate sheets on the inner edge of the roof allow daylight to fall on the pitch, while the winds can blow gently across the grass from numerous access points within the grandstands. The seating sections are clearly defined, easily accessible and safe. Their steep rise ensures that each fan is moved closer to the turf and better able to look over the spectators in front of him. The best view is reserved for the VIP-Guests over on the western side of the stadium. Here they can enjoy the games in any of the 40 boxes, each featuring 35 square metres over two levels. The VIP galleries behind the boxes are furnished with luxurious materials such as wooden parquet, light-coloured large-format tiles, glass



# "PRECISION WORK ON THE CONSTRUCTION SITE"

Fliesen - Brück GmbH, Münster

The construction of the Rhein-Neckar-Arena was an exciting task for all concerned. As we have already been using products from SCHOMBURG for many years, we were largely familiar with their application and able to work in a fast and accomplished manner. However, the requirements placed on materials for an event structure such as this are enormous. For instance, tiles and substrates in the catering kitchens and kiosks on the promenades are required to withstand high loads and be water and germ resistant. As a result we chose to apply the elastic Asoflex-AKB-Waterproofing as a substrate for the wall and floor tiles. We also installed tiles in the sports studio, the two relaxation pools, the showers and on the galleries. In total, we applied almost 13,000 square metres of wall and floor tiles throughout the stadium facilities, at a rate of up to one thousand square metres per week. The timely completion of the entire structure was truly a logistical masterpiece.

## PRODUCT- EXPERTISE

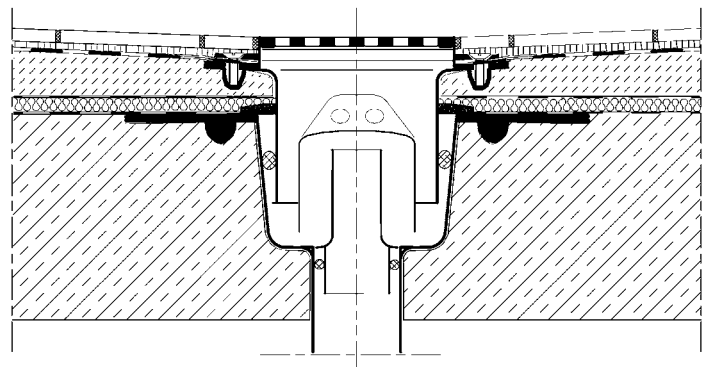
**Areas Completed** Communal areas (wet rooms, dressing rooms), kiosk promenade, catering areas on the western stand (VIP area)

**Tile adhesive** AK7P, UNIFIX-S3, SOLOFLEX, SOLOFLEX-FAST, UNIFIX-2K, ADF-Systemkleber, CRISTALLIT-MULTI-flex | **Tile Grout** ASO-Flexfuge, HF05-Brillanfuge | **Underlayment** SOLOPLAN-30 | **Decoupling** STEPBOARD | **Levelling Mortar** SOLOCRET-15 | **Primer** ASO-Unigrund-K | **Epoxy Primer** INDUFLOOR-IB1225 | **Cementitious Waterproofing** AQUAFIN-2K/M | **Dispersion Waterproofing** SANIFLEX | **Waterproofing PU** ASOFLEX-AKB/EP-Floor, ASOFLEX-AKB/EP-Floor 7038, ASOFLEX-AKB/EP-Wall 7038 | **Waterproofing Membrane** SANIFIN | **Sealing Tape** ASO-Joint-Tape-2000, ASO-Joint-Tape-2000-S | **Sealing Tape - Corners / Sleeves** ASO-Joint-Sleeve Floor+Wall, ASO-Joint-Tape-2000-S-Corners | **Sealing Grout** INDUCRET-VK-100 | **Other** Spiked Roller Type 10, Primer-2000, Quartz Sand G23T, UNIFLEX-B

Photos (3): Uwe Grün, KraichgauFoto



balustrades, stainless steel railing, fashionable furniture in brown and white and the panorama of the Kraichgau hills behind the glass facade. The true luxury however, is space, and not just in the galleries. From the very spacious players' dressing rooms, at 150 square metres, to further areas, such as a warm-up room with an artificial turf, rooms for doctors and physical therapists and ice and relaxation baths. Here too, the materials were selected with care in a reserved colour scheme: specialty rubber flooring in warm tones for the dressing rooms, simple wooden lockers with blue elements, non-slip grey-tiled floors in the shower and Kneipp rooms. Matt-white wall tiles reflect the light from the downlights illuminating those spaces which do not receive natural daylight but in which players should nevertheless feel good and replenish their energy before running out onto the pitch. Here the sheer wall of spectators awaits, they can only hope that the baying fans are their own.



Floor drain, not to scale

Rosa Grewe  
Darmstadt, Germany

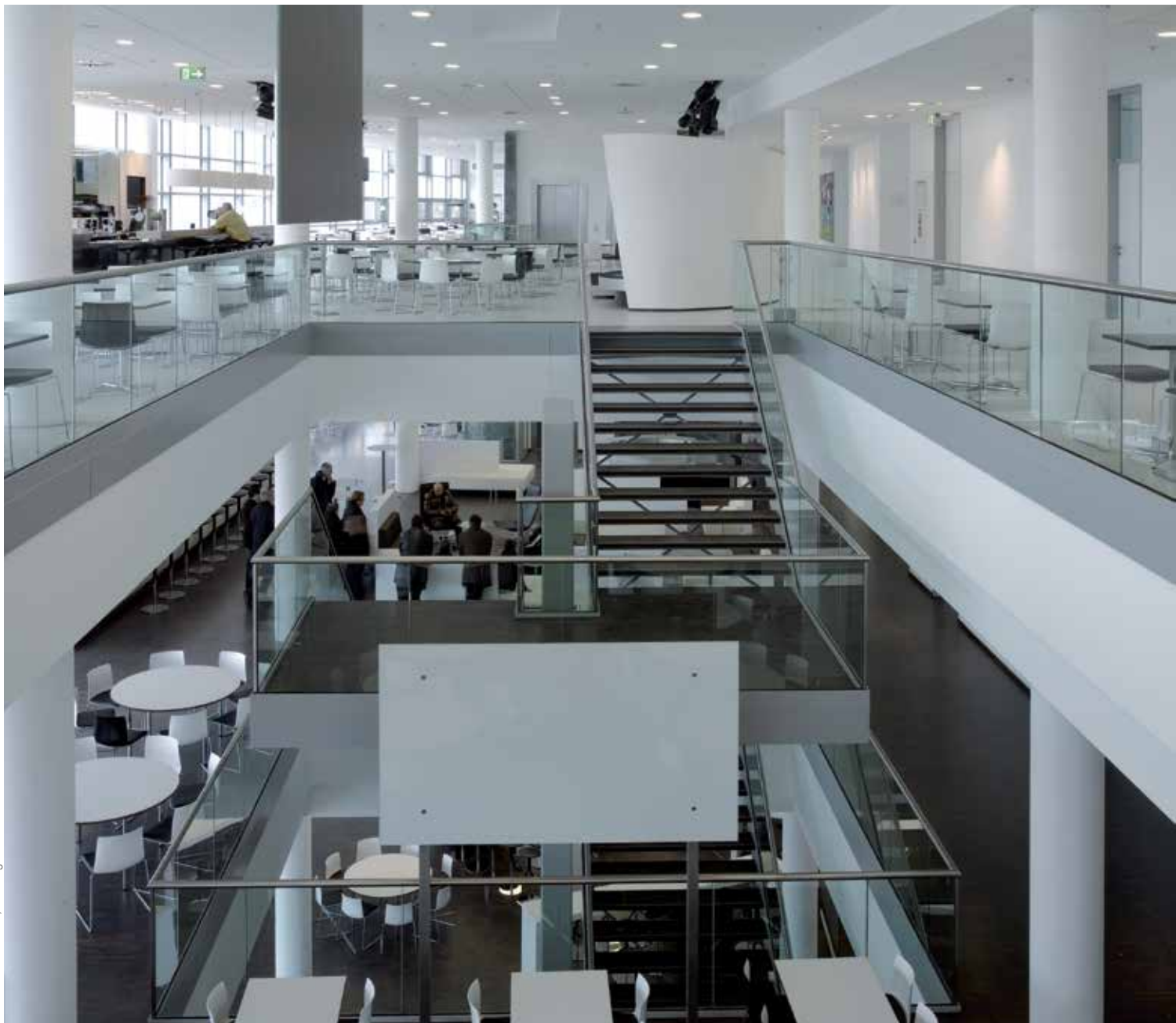


Photo: Christian Richters, anrimages

The floors are connected to one another via an open stairway

## "A SPECIAL CHALLENGE"

Wolfgang Franke, General Planner at agn Niederberghaus & Partner GmbH, Ibbenbüren

Be it the floating roof, extremely steep grandstand or the new mark placed in the landscape – it truly is a worthy stadium for the winter champion of the Bundesliga. The aggressive goal called for planning, implementation and completion of the stadium within 24 months. This schedule was only met due to the interdisciplinary work of the general planner, which enabled the overlapping and parallel progression in various stages and disciplines.

The approval plans had been submitted within just two months, with construction amazingly commencing a mere four months later. The main difference of this project to comparable other stadium constructions was the assignment of the work to classic individual tradesmen instead of to a single general contractor.



Photo: agn Niederberghaus & Partner GmbH, Ibbenbüren

The players dressing rooms and wet room areas were the main focuses for SCHOMBURG's products. Both the ice bath and relaxation bath are completely tiled. Unfortunately, all of these areas are not open to the public



## CONSTRUCTION DATA

**Building** Rhein-Neckar-Arena, Sinsheim

**Client** 1899 Hoffenheim

**Architect** agn Niederberghaus & Partner GmbH, Ibbenbüren

**Tiling work** Fliesen-Brück GmbH, Münster

**Work period** 07 - 12 2008

**Total surface area** (wall and floor tiles) approx. 13,500 m<sup>2</sup>

**Number of workers** up to 40 tilers, waterproofers, technicians

## SELECTION OF REFERENCES

Photo: Reinhard Koslowski



LTU Arena, Duesseldorf



Hyatt Regency Hotel, Trinidad



Festland-Bäderland, Hamburg

LTU Arena, Düsseldorf | football stadium   Hyatt Regency Hotel, Trinidad | swimming pool | indoor swimming pool | outdoor swimming pool | swimming pool   Festland-Bäderland, Hamburg | swimming pool   5-Star Hotel, St. Truskavetz, Ukraine | swimming pool | indoor swimming pool | open-air swimming pool   Rehab Centre, Psychiatric Clinic, Schwerin | hospital | clinic | spa clinic | sanatorium   Zoo, Landau | water basin   Port Renovation, Illichivsk, Ukraine | port   Waterproofing Work in a Cafeteria, Stryi, Ukraine | cafeteria



# SCHOMBURG

SCHOMBURG GmbH & Co. KG  
Aquafinstrasse 2-8  
D-32760 Detmold (Germany)  
phone +49-5231-953-00  
fax +49-5231-953-108  
email [export@schomburg.de](mailto:export@schomburg.de)  
[www.schomburg.com](http://www.schomburg.com)

