

Product information

Tile adhesives/Thin-bed mortars

SOLOFLEX

Flexible thin- and medium-bed adhesive

grey, C2 TE



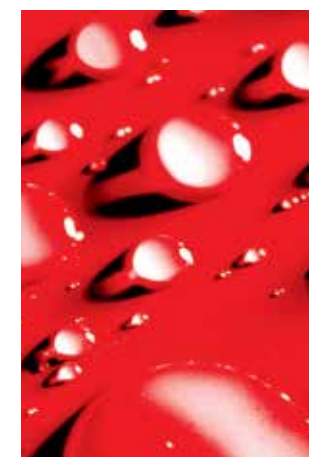
Areas of application:

- SOLOFLEX is a flexible thin-bed or medium-bed adhesive (up to 10 mm) for the installation of porcelain, vitrified and earthenware tiles and other ceramic finishes, mosaics and natural stone, that is not sensitive to discolouration nor is translucent.
- SOLOFLEX is suited for tiling to all substrates in accordance with DIN 18157, part 1, e.g. concrete, aerated concrete, plaster/render, cement-based and calcium sulphate based heated and unheated (flow) screeds, masonry work, moisture resistant plasterboard and gypsum fibre boards, composite materials in expanded or extruded polystyrene with a mortar coating and reinforcement layer embedded, etc.
- For tiling over mineral-based or dispersion-based SCHOMBURG bonded waterproof membranes.

Technical Data:

| | |
|--------------------------------------|---|
| Mix ratio: | 6.75 – 8.0 litres of water : 25 kg SOLOFLEX |
| Application / substrate temperature: | +5°C to + 25°C |
| Open time*: | approx. 30 mins |
| Foot traffic/ready to grout*: | after approx. 24 hrs |
| Consumption: | approx. 2.3 kg/ m ² with a 6 mm notched trowel approx. 3.1 kg/ m ² with an 8 mm notched trowel approx. 3.7 kg/ m ² with a 10 mm notched trowel |
| Full service conditions*: | after approx. 7 days |
| Reaction to fire: | A1/A1 _{fl} |
| Packaging: | 6 and 25 kg plastic bag |

*at +20 °C and 65 % relative humidity



SCHOMBURG GmbH & Co. KG
Aquafinstraße 2-8
D-32760 Detmold (Germany)
phone +49-5231-953-00
fax +49-5231-953-108
email export@schomburg.de
www.schomburg.com

SOLOFLEX



Flexible thin- and medium-bed adhesive grey, C2 TE

Properties:

- Sag resistant
- Medium bed adhesive up to 10 mm thickness
- For porcelain tiles
- For heated screeds
- For interior and exterior use
- Tested to DIN EN 12004 C2 TE

Product preparation:

Mix SOLOFLEX in a clean mixing bucket with clean water until homogenous. Mixing ratio: 6.75 – 8.0 litres of water : 25 kg SOLOFLEX. Allow to stand for 3 minutes, then re-mix. Do not mix more SOLOFLEX than can be used within the pot life. Spread the mixed adhesive over the substrate surface and comb through with a notched trowel appropriate to the tile size. Install the tiles within the adhesive open time.

When installing large format tiles or tiled finishes in more demanding conditions or where there are temperature fluctuations, we recommend that SOLOFLEX is modified with UNIFLEX®-B. The deformation to DIN EN 12002 is considerably increased and the adhesive open time extended. To improve workability, mix UNIFLEX®-B with water and then mix with SOLOFLEX until homogenous.

Mix ratio, highly deformable especially suitable for wet duty class B0 (conforms to class C1E S2, deformation approx. 30 mm):
8.33 kg UNIFLEX-B : approx. 2 litres water : 25 kg SOLOFLEX

Mix ratio, highly deformable (conforms to class C2E S2, deformation > 5 mm):
4.17 kg UNIFLEX-B : approx. 3.75 litres water : 25 kg SOLOFLEX

Mix ratio, deformable (conforms to class C2E S1, deformation > 2.5 mm):
2 kg UNIFLEX-B : approx. 5.4 litres water : 25 kg SOLOFLEX

Application:

The substrate must be dry, load-bearing, adequately flat, be free from penetrating cracks and separating substances such as oils, paints, laitance and loose areas. It must have a closed surface texture and exhibit surface characteristics and strength consistent with its type. When installing tiles, the substrate, its preparation and workmanship must conform to DIN 18157, part 1. Prime absorbent substrates with ASO-Unigrund. Heated floors are to be heated prior to installing tiles. The readiness of a substrate to receive finishes is to be determined by the carbide (CM) method and may not fall below the following values:

- CT ≤ 2.0% (when installing large format tiles 1.5%)
- CA/CFA unheated ≤ 0.5%, heated ≤ 0.3%



1 Load-bearing substrate



2 Priming the substrate, e.g. with ASO®-Unigrund



3 Adding the adhesive to a measuring bucket



4 Mixing the adhesive



5 Setting out the wall



6 Combing out the adhesive bed



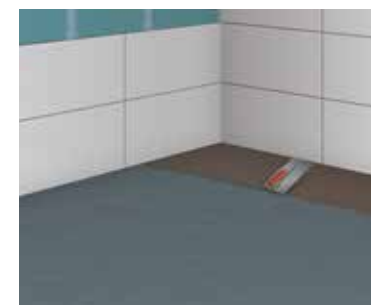
7 Fixing the wall tiles



8 Priming the substrate, e.g. with ASO®-Unigrund



9 Setting out the floor



10 Combing out the adhesive bed



11 Applying a contact layer with large format tiles



12 Laying the floor tiles



13 Finished area ready for use

