



**WATERPROOFING
OF BUILDINGS
PLANNING CORRECTLY**

Reliably and effectively
maintaining building value.

Long-term reliability with system products

and the correct waterproofing



Optimum waterproofing of basements, walls and foundations is the most important prerequisite for preserving the value of a building in the long term, protecting it from dampness penetration and ensuring a pleasant indoor climate.

The choice of the right building waterproofing and correct application play key roles here.

However, other factors such as weather conditions, scheduling and individual circumstances at the building site must also be taken into account.

We want to show you which bituminous and cementitious waterproofing systems from SCHOMBURG are the right choice to implement your construction project reliably and successfully.

We also give an overview of indispensable system products, such as a waterproof mortar and an improved adhesion primer, and show you the advantages and possibilities of mechanical application of building waterproofing.



CONTENTS

04 – 05

Application areas and selection criteria

06 – 07

Cementitious waterproofing

08 – 09

Bituminous waterproofing

10 – 11

Machine processing & water exposure classes

12 – 13

Multimortars & basic priming

14 – 15

System products

Application areas and selection criteria

An overview

There are many different factors involved in choosing the right waterproofing. These can be, for example, the type of water exposure class, the time schedule, the subsoil situation and the ambient conditions.

SCHOMBURG waterproofing systems offer a wide range of application and processing options.

For newbuild and renovation:

Our system brochure provides guidance on the planning and installation of waterproofing. Notes and detailed explanations on water exposures, crack and usage classes, classification of different types of waterproofing and application are the subject of the series of standards.

Manual processing:

Our polymer-modified thick layer coatings (PMBCs) can be applied very easily by float due to the smooth material consistency. The 1-component polymer-modified thick layer coatings can be applied directly without mixing. The 2-component materials impress with their fast curing under adverse ambient conditions.

Machine application:

All SCHOMBURG waterproofing systems are suitable for machine application for greater coverage. The materials can be processed with a peristaltic, screw or airless pump.

Area of application	Product	Application
Waterproofing of buildings 1-comp. (bituminous)	COMBIDIC-1K	<ul style="list-style-type: none"> Waterproofing components in contact with the ground in new buildings Retroactive waterproofing
	COMBIDIC-1K-S	<ul style="list-style-type: none"> Waterproofing components in contact with the ground in new buildings Retroactive waterproofing Especially for waterproofing work using the spray technique
Waterproofing of buildings 2-comp. (cementitious & bituminous)	AQUAFIN-RB400	<ul style="list-style-type: none"> Waterproofing components in contact with the ground in new buildings For waterproofing window and door elements to floor level Waterproofing in plinth area transition Retroactive waterproofing
	COMBIDIC-2K-CLASSIC	<ul style="list-style-type: none"> Waterproofing components in contact with the ground in new buildings Retroactive waterproofing Bonding of insulation boards
	COMBIDIC-2K-PREMIUM	<ul style="list-style-type: none"> Waterproofing components in contact with the ground in new buildings Retroactive waterproofing Sealing in concrete structures
Primer & protective coat	AQUAFIN-Primer	<ul style="list-style-type: none"> Special primer For concrete and masonry work
	ASOL-FE	<ul style="list-style-type: none"> Primer for bituminous applications Protective coating against non-pressurised and pressurised seepage water For underground and shaft construction



Advantages

- Ready to use
- Easy application
- Optimised for airless processing
- Can be sprayed with peristaltic and screw pumps
- Radon-tight
- Can be plastered and coated
- Good crack bridging qualities
- Overcoat after 3 hrs
- Radon-tight
- Easy and economical application
- Rapidly rainproof
- Radon-tight
- Fully cured after a curing time of approx. 24 hours.
- High pressure resistance
- Radon-tight
- Ready to use
- Rapid drying
- Substrate consolidating
- Can be applied by brush, roller and spray
- Solvent-free

System products

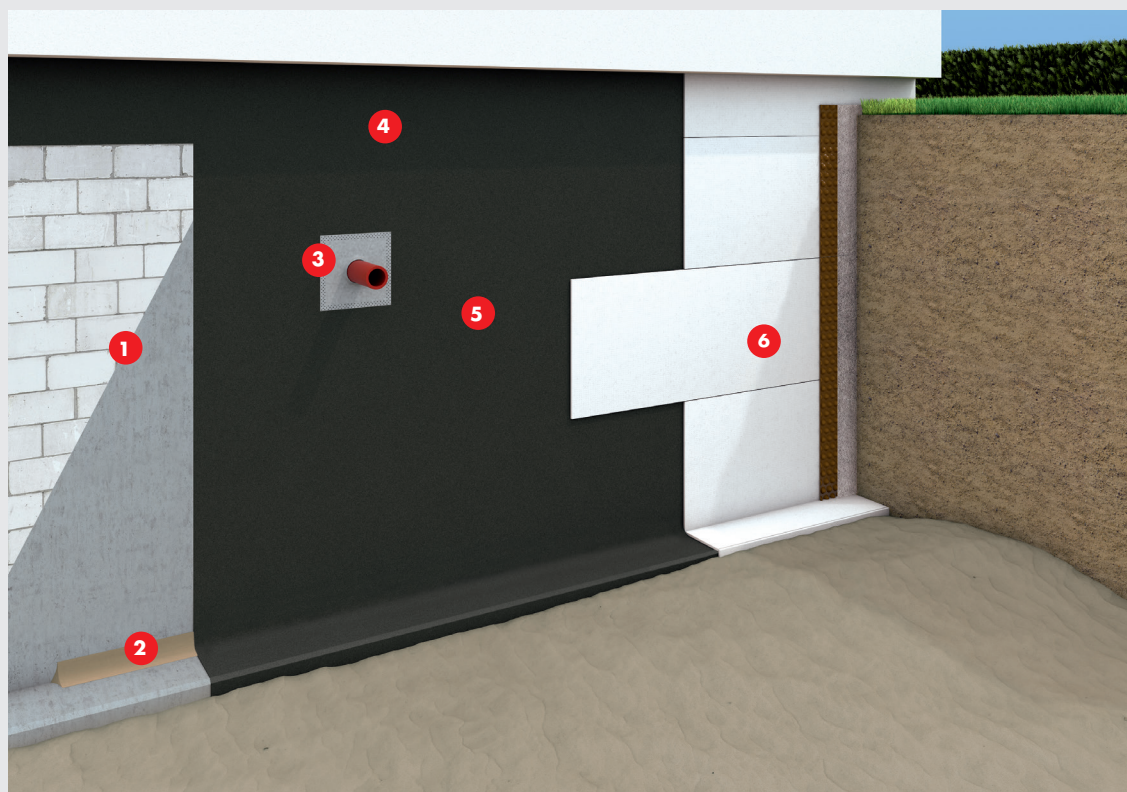
- **ASOCRET-M30**
as watertight sealing cove mortar
- **AQUAFIN-1K**
as a cementitious waterproofing slurry for pre-sealing of building components in direct ground contact
- **ASO-Joint-Tape-2000-S**
for the watertight forming of expansion and connecting joints
- **ASO-Connector-Joint-Tape**
for reliable sealing of floor-to-ceiling window or door elements
- **ADF-Expansion-Joint-Tape** for watertight sealing of connection and movement joints
- **ADF-Pipe-Gasket**
for the watertight waterproofing of pipe penetrations
- **ASO-reinforcing fabric** as inlay in thick layer coatings

Cementitious waterproofing

With **AQUAFIN**-RB400

Cementitious waterproofing products such as **AQUAFIN** RB400 are characterised by their versatility. The reactive drying is a major advantage in practice. This means, no matter whether it is raining, hot or cold, **AQUAFIN** RB400 dries almost climate-

independently. And it does so particularly quickly. The material can be reworked after just three hours and enables rapid construction progress that would be unthinkable when using bituminous waterproofing.

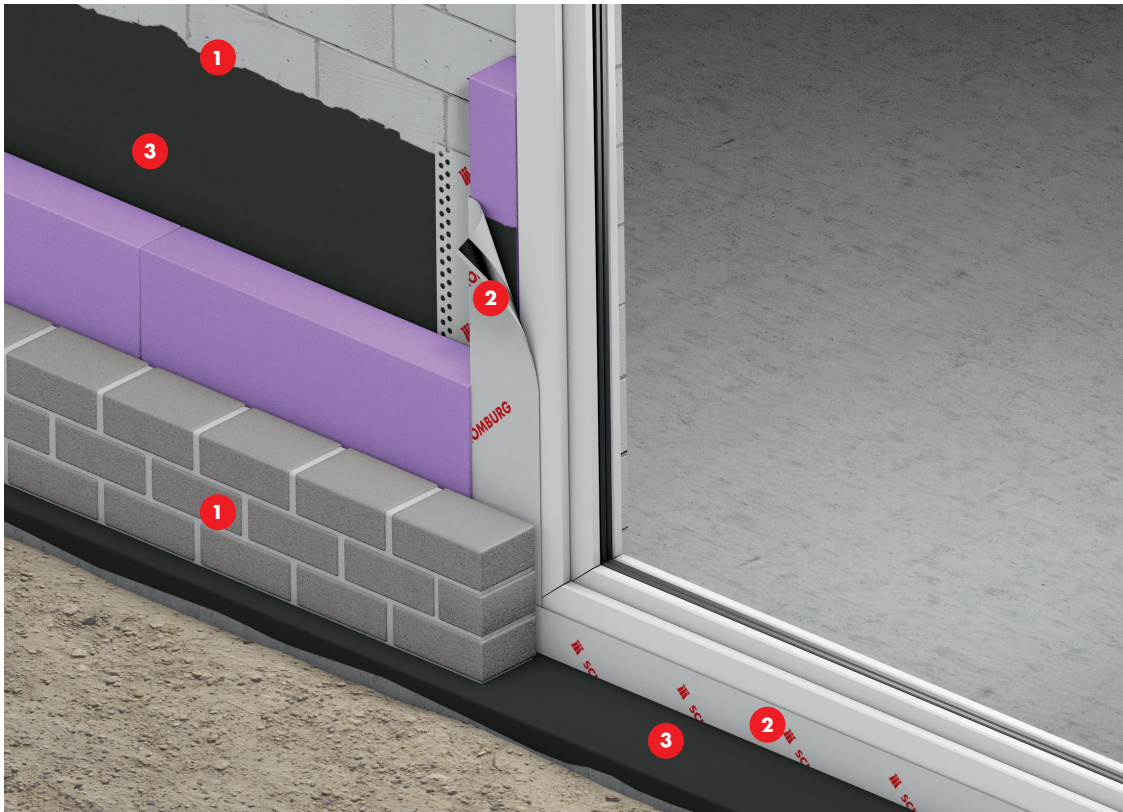


Waterproofing for new and existing buildings with **AQUAFIN**-RB400

- 1 Full-joint/smooth masonry work/concrete
- 2 Cementitious fillet with **ASOCRET**-M30
- 3 Sealing gasket with **ADF**-Pipe-Gasket
- 4 Plinth area transition with **AQUAFIN**-RB400
- 5 Area waterproofing with **AQUAFIN**-RB400
- 6 Protective layer



Plinth and feature waterproofing with **AQUAFIN**-RB400



- 1 Double-shell masonry work, back masonry work/outer shell
- 2 Sealing tape technique on components
- 3 Waterproofing under rising walls and back masonry with **AQUAFIN**-RB400



i Website

You can find other solutions and application areas for **AQUAFIN**-RB400 at aquafin.de.



AQUAFIN-RB400 Rapid cementitious waterproofing

- Flexible polymer modified thick layer coating (FPD)
- Cementitious waterproofing slurry (MDS)
- Bitumen-free
- Rapid reactive drying
- Improved crack bridging even at low temperatures (-5 °C)
- Very low-emission - EMICODE® EC 1 PLUS



System products

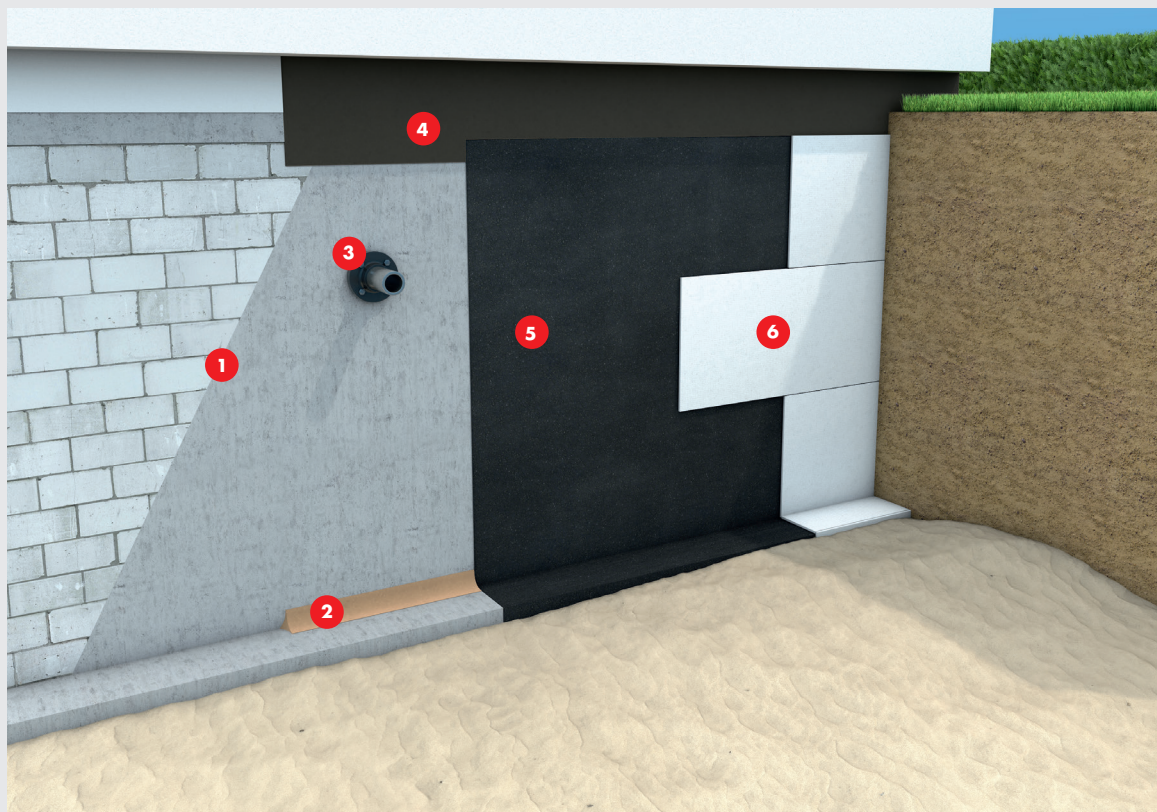
- **ADF**-Pipe-Gasket
- **ASOCRET**-M30
- **AQUAFIN**-Primer
- **AQUAFIN**-1 K
- **ASO**-Joint-Sealing-Tape-2000-S
- **ASO**-Connector-Joint-Tape
- **ADF**-Expansion-Joint-Tape

Bituminous waterproofing

Waterproofing solutions with PMBC's

Building components in the ground require high-quality, professional waterproofing. Bituminous thick layer coatings offer a good solution for creating a secure building waterproofing in

exterior areas. Selection of matching waterproofing components for cellar masonry depends on a variety of factors, such as water exposure class.



Waterproofing for new and existing buildings with bituminous thick layer coating (PMBC)

- 1 Full-joint/smooth masonry work/concrete
- 2 Cementitious fillet with **ASOCRET-M30**
- 3 Suitable loose/fixed flange construction
- 4 Waterproofing of plinth area transition with **AQUAFIN-RB400**
- 5 Area waterproofing with **COMBIDIC-2K-PREMIUM/COMBIDIC-2K-CLASSIC**
- 6 Protective layer



Products



COMBIDIC-1K

1K Bituminous thick layer coating (PMBC)

- For waterproofing in direct ground contact with ground moisture and non pressure water
- Ready to use
- Seam-free and jointless
- Flexible and crack bridging



COMBIDIC-1K-S

1K bituminous thick layer coating (PMBC)

- For waterproofing ground moisture, non pressure water, pressing water
- Ready to use
- Seam-free and jointless, flexible, crack-bridging waterproofing
- Optimised for spray application
- Radon tight



COMBIDIC-2K-CLASSIC

2K component bituminous thick layer coating (PMBC)

- For waterproofing ground moisture, non pressure water, pressing water
- Seam-free and jointless
- Flexible and crack bridging
- Polystyrene filled



COMBIDIC-2K-PREMIUM

Reactive 2-component bituminous thick layer coating (PMBC)

- For waterproofing ground moisture, non pressure water, pressing water
- Flexible and crack bridging
- Radon tight
- Rapid drying



System products

- **AQUAFIN**-Primer
- **ASO**-reinforcing fabric
- **ASOCRET**-M30
- **ASOL**-FE
- **AQUAFIN**-1K
- **ASO**-Joint-Tape-2000-S
- **ASO**-Connector-Joint-Tape
- **ADF**-Expansion-Joint-Tape
- **ADF**-Pipe-Gasket

Machine application in structural waterproofing

Shorten construction time, more reliable results

By using suitable machine technology, waterproofing can be applied quickly and economically. Spray sealing is also useful for smaller buildings, as in addition to fast application it offers other advantages such as a large feed range and a clean and

professional spray finish. SCHOMBURG supports you with your project. Talk to us, we are happy to advise you



i Video

Airless spraying in combination with cementitious waterproofing **AQUAFIN-RB400**.



List of machine techniques

Product	Machine application		
	Peristaltic pump	Screw pump	Airless pump
AQUAFIN-RB400	+	+	+
COMBIDIC-1K	+	+	
COMBIDIC-1K-S	+	+	+
COMBIDIC-2K-CLASSIC	+	+	+
COMBIDIC-2K-PREMIUM	+	+	

Further information on machine application can be found in our **Technical Information Sheet 43** "Machinable bituminous products, slurries and injection products" at schomburg.de.



Water exposure classes

The right solution for every application

The waterproofing of building components in direct ground contact with waterproofing materials applied in liquid form and waterproofing membranes is defined in water exposure classes. The standard provides guidance on the planning and installation of waterproofing. Notes and detailed explanations on water

exposures, crack and usage classes, classification of different types of waterproofing and application are the subject of the series of standards. Below you will find a list of SCHOMBURG structural waterproofing types for the individual water exposure classes.

Water exposure classes after	Possible product	Minimum dry layer thickness approx.	Minimum consumption
Ground moisture and non-pressurised water in case of floor slabs and walls in direct ground	AQUAFIN -RB400	3.0 mm ³⁾	3.60 kg/m ²
	COMBIDIC -1K	3.0 mm ¹⁾	4.00 l/m ²
	COMBIDIC -1K-S		3.50 l/m ²
	COMBIDIC -2K-CLASSIC		4.00 l/m ²
	COMBIDIC -2K-PREMIUM		4.00 kg/m ²
	AQUAFIN -2K/M-PLUS		3.50 kg/m ²
Ground moisture and non-pressurised water in case of floor slabs and walls with drainage in direct ground	KSK -waterproofing membrane		1.00 m/m
	AQUAFIN -RB400	3.0 mm ³⁾	3.60 kg/m ²
	COMBIDIC -1K	3.0 mm ¹⁾	4.00 l/m ²
	COMBIDIC -1K-S		3.50 l/m ²
	COMBIDIC -2K-CLASSIC		4.00 l/m ²
	COMBIDIC -2K-PREMIUM		4.00 kg/m ²
Moderate influence from pressure water ≤3 m immersion depth	AQUAFIN -2K/M-PLUS		3.50 kg/m ²
	AQUAFIN -RB400	4.0 mm ²⁾	4.80 kg/m ²
	COMBIDIC -1K-S		4.50 l/m ²
	COMBIDIC -2K-CLASSIC		5.00 l/m ²
High exposure to pressing water > 3 m immersion depth	COMBIDIC -2K-PREMIUM		5.00 kg/m ²
	AQUAFIN -RB400 ⁵⁾	4.0 mm ²⁾	4.80 kg/m ²
Non-pressurised water on earth-covered slabs	AQUAFIN -RB400	3.0 mm ²⁾	3.60 kg/m ²
	COMBIDIC -1K	4.0 mm ²⁾	5.00 l/m ²
	COMBIDIC -1K-S		4.50 l/m ²
	COMBIDIC -2K-CLASSIC		5.00 l/m ²
	COMBIDIC -2K-PREMIUM		5.00 kg/m ²
Splash water and ground moisture at the wall base and capillary water in and under walls	AQUAFIN -RB400	2.0 mm ³⁾	2.40 kg/m ²
	COMBIDIC -1K ⁴⁾	3.0 mm ¹⁾	4.00 l/m ²
	COMBIDIC -1K-S ⁴⁾		3.50 l/m ²
	COMBIDIC -2K-CLASSIC ⁴⁾		4.00 l/m ²
	COMBIDIC -2K-PREMIUM ⁴⁾		4.00 kg/m ²
	AQUAFIN -2K/M-PLUS		3.50 kg/m ²

¹⁾ Two-layer application when still wet

²⁾ Double-layer application, reinforcing fabric in first layer, application of second layer when first layer is no longer damaged

³⁾ Two-layer application, application of second layer when first layer is no longer damaged

⁴⁾ Not as a cross-section waterproofing

⁵⁾ On waterproof concrete construction up to 7.5 m immersion depth. Suitability must be checked on site depending on the conditions.

Always on the right side

With the versatile multimortar **ASOCRET-M30**

Every building waterproofing system also includes a special waterproof mortar. Whether as levelling compound, repair mortar, barrier plaster or sealing cove mortar - with the waterproof multi-mortar **ASOCRET-M30** you are on the safe

side for every application. Reactive drying for rapid construction progress even under challenging weather conditions **ASOCRET-M30** is a genuine all-rounder for daily use on the building site.



ASOCRET-M30 watertight multi-mortar up to 30 mm

- Suitable as building skirt render
- Waterproof fillet mortar
- High slump resistance
- Rapid setting
- Sulphate resistant
- Hydrophobic





Reliable from the ground up

With the dependable **AQUAFIN**-Primer

AQUAFIN-Primer is the optimal solution for the reliable preparation of cementitious substrates for subsequent waterproofing work. The primer is ideally suited for use on weak and highly absorbent cementitious substrates such as concrete or masonry work.

AQUAFIN-Primer is ready to use, quick drying and acts as a substrate consolidator. The capillary absorbency is reduced on the surface and at the same time improves the substrate adhesion for subsequent layers.



AQUAFIN-Primer

Dependable primer for building waterproofing and renovation



- Dispersion silicate primer with improved adhesion properties
- Ready to use
- Rapid drying
- Substrate consolidating
- Reduces the capillary absorbency on the building material surface.
- Dust-binding
- Solvent-free and vapour permeable

Other system products

For reliable waterproofing of your projects



ASOL-FE

bituminous pre-coating/protective coating

- Latex-enhanced bituminous emulsion
- Ready to use
- Elastic
- Solvent free



AQUAFIN-1K

cementitious waterproofing slurry

- Rigid mineral-based waterproofing slurry
- Resistant to concrete-damaging water, in accordance with DIN 4030



ASO-reinforcing fabric

reinforcing fabric

- Resistant to all pollutants occurring in the soil
- Glass-fibre fabric with high tensile strength

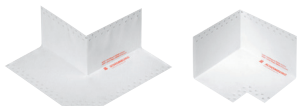


ASO-Joint-Tape-2000-S

Special waterproof tape for more demanding situations and heavy duty use

- Finishing strip suitable for plastering over





ASO-Joint-Tape-2000-S-corners Sealing corners for heavy loading

- Tear-resistant
- Particularly stretchy
- Watertight
- UV-stabilised
- Highly resistant to aggressive media
- Very low emission



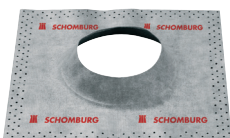
ASO-Connector-Joint-Tape Joint sealing tape with butyl adhesive strips

- Fleece-laminated joint sealing tape
- Flexible and stretchy
- High bonding - thanks to one-sided butyl strip



ADF-Expansion-Joint-Tape Elastic sealing tape for waterproofing

- Resistant to all pollutants occurring in the soil
- Glass-fibre fabric with high tensile strength



ADF-Pipe-Gasket Pipe gasket for waterproofing

- Tear-resistant
- Particularly stretchy
- Watertight
- Bitumen compatible



The SCHOMBURG Group develops, produces and distributes building product systems for the areas of:

- Waterproofing and repair of buildings
- Tiles/natural stone/screed application
- Ground protection/floor coating systems

For over 85 years SCHOMBURG's development competence has been recognised in both the domestic and the worldwide marketplace. Building product systems that are produced in-house are highly prized around the world.

Experts value the quality and the efficiency of building product systems, the services and therefore the core competence of the group of companies.

To meet the demanding requirements of an ever-changing market, we continuously invest in the research and development of new and already existing products. This guarantees an ever increasing product quality to the satisfaction of our customers.

SCHOMBURG GmbH & Co. KG
Aquafinstraße 2-8
D-32760 Detmold (Germany)
Telephone +49-5231-953-00
Fax +49-5231-953-333
www.schomburg.com

